

inspections and tests as being of that breed. Other breeds also allow 'mixed' breeding; Paint Horses allow foals from Paint, Quarter Horse, or Thoroughbred bloodlines. A good rule of thumb is to choose parents that are the same breed as your foal. If you want to get more creative you will have to research the breed's registration requirements.

**3. AGE REQUIREMENTS:** In real horses you will find an occasional stallion bred to one or two mares at the tender age of two. Even then the stallion will be three years old before the foals hit the ground. Mares aren't bred until the age of three at the earliest with the foals hitting the ground when the mare is four years old. Therefore most people say that foals must be at least three years younger than stallions and four years younger than mares. However, this is a general rule of thumb. You must look at each sire/dam list for breeding rules.

The second age consideration deals with how you age your horse. Do you choose a year foaled for your horse or do you decide on a set number of years? Do you want your horse to be born in 1991? In that case your horse will get older each year (Just like us.) Or do you want to assign your horse an age such as six years old? Here your horse will not get older each year (Wouldn't that be wonderful?), either way is fine. However, when choosing model parents you should stick with using models that use the same aging definitions that you do. I personally use both systems. I age all of my adult models but allow my foal models to stay the same age year after year.

**4. NUMBER OF FOALS PER HORSE:** This is another area that can be done in varying ways. Some people follow the one foal per year for their mares. Some people allow more than one foal per year per mare because of the use of embryo transfer (ET) in real horses. Most people agree that stallions may have a multitude of foals. With the use of artificial insemination in stallions this is entirely possible. You will have to decide upon which breeding policy you will want to follow. I've chosen to stay with the one foal per year per mare rule with a rare exception for twins. Note: Even though embryo transfer is allowed now in some registries, most of these registries only allow one foal, either an ET foal or naturally carried foal, to be registered.

**5. MODEL vs. REAL:** It is up to you on if you want to use model or real horses for your foal's sire/dam. When I started doing model horse breeding back in the early '80s, there weren't many model sire/dam lists to choose from. I therefore had to use real horses for some of my Foundation Stock. Then I used these foundation stock models as parents for the rest of my models. Later, I found other people who were breeding horses who allowed me to use some of their horses.

If you use other people's models you must get permission from the other person to use their horses. Most people will require a Self Addressed Stamped Envelope (SASE) when you ask for permission to use their horses. This way they can return your breeder's certificate and pedigree. Besides including the SASE, check and see if you owe a breeding fee. Most breeding fees stay around the \$.05 to \$.25 range with an occasional National Champion going for more. Some people may prefer to a photo of the foal to use in Get of Sire and Produce of Dam classes, or they may ask for postage stamps instead of money.

If you use a real horse you do not have to get the owner's permission. Can you imagine the scenario? "Yes, I would like breed Seattle Slew to my model mare, yes a little plastic mare." I don't think so. You may use any real horse in your pedigree providing that the horse was available for breeding at the time your foal

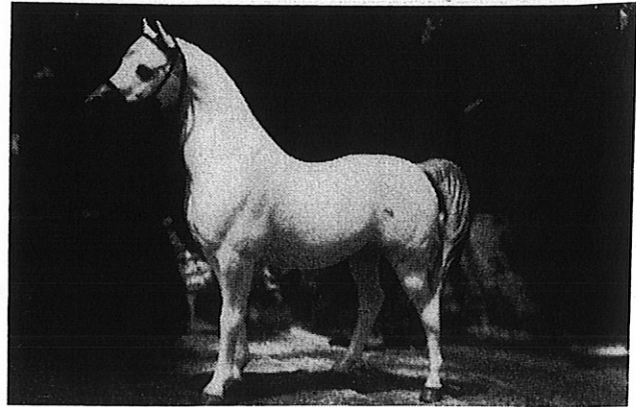


Photo by Leah Posey-Patton

Shadow's Welsh Chantez, 20 year-old Grey Egyptian Arabian Mare.



Photo by Leah Posey-Patton

Nosferatu, 6 year-old American Warmblood Stallion (Black Heart x Shadow's Welsh Chantez). Nosferatu's sire is a Fresian. In this stunning breeding, the refinement of the Arabian head is present as well as the long Fresian legs and feathering.

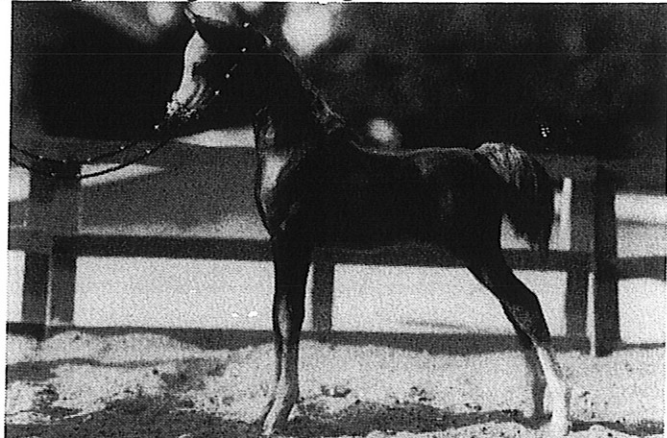


Photo by Leah Posey-Patton

With this 4 month-old filly, Shlei Bint Vallachia, Nosferatu was bred back to an Arabian for a more refined 3/4 Arab.

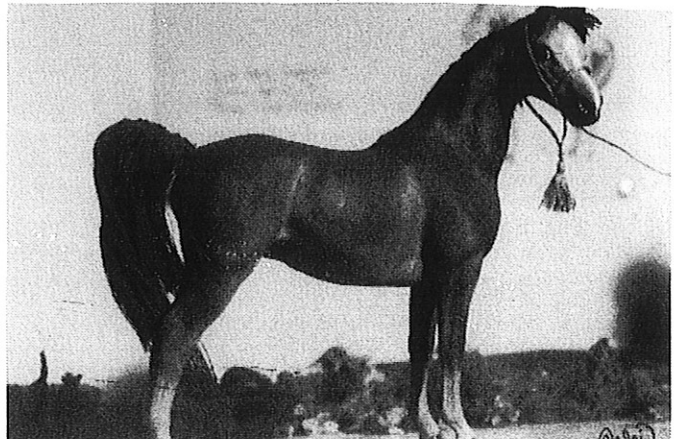
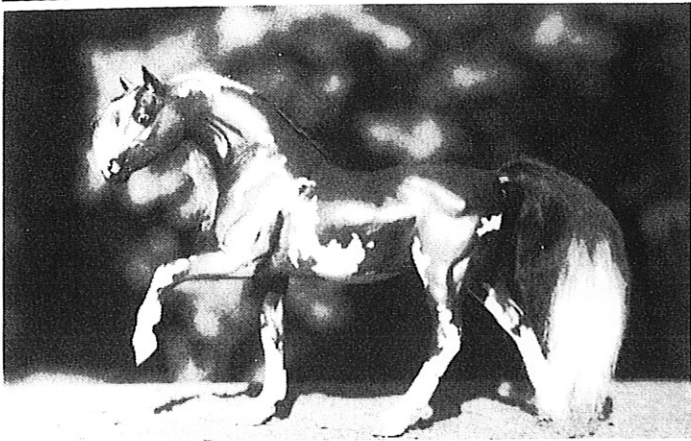


Photo by Leah Posey-Patton

Shlei - The Blood Countess is a 2 year-old 3/4 Egyptian Arabian and 1/4 Fresian American Warmblood as well.

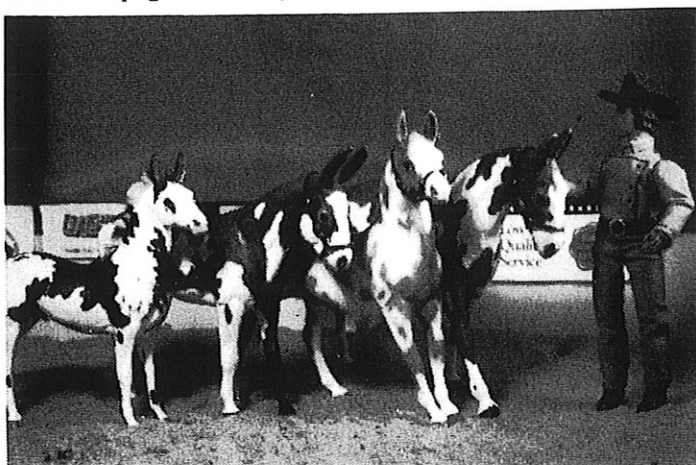


Elite Navidad, Purebred Pinto Arabian Stallion. For more information on the real live Purebred Pinto Arabian, contact The Southwestern Pinto Arabian Association & Registry, c/o R.C. Ellerd, 942 Kathryn Lane, Royse City, TX 75189.

was born. (Technically this should be conceived, but since we don't want to wait 340 days, we use at the time of birth.) In other words you couldn't say that your 2 year-old TB stallion is a son of the immortal Man O'War. Man O'War may be considered immortal, but he has really been dead for quite a while and would not have any 2 year-old foals running around. If you really like the Man O'War bloodline then you would look for a stallion/mare that has Man O'War in their pedigree to use as your foal's sire and/or dam.

**6. RECORD KEEPING:** This is a must. I keep two different records on my models. I keep an Information Sheet on each horse. This would include the horse's name, age, breed, color, model/make information, sire & dam and any other pertinent information. My second record is the Get Of Sire (GOS) or Produce of Dam (POD) Record. On this record I include the horse's name, age, and breed. Then I write down information on each foal. This information includes the foal's name, age, breed, sex, color, model/make, owner and the same information for the other parent. A stallion's GOS record is pretty simple. I place the stallion's name, age, and breed at the top of the page. Then I just start recording information on the foal and on the foal's dam. Usually I number each foal so I can tell in a glance how many foals the stallion has.

The mare's POD Record is a bit more complicated. I put the mare's name, age and breed at the top of the page. Then I label the left side of the page with the years available to that mare. For



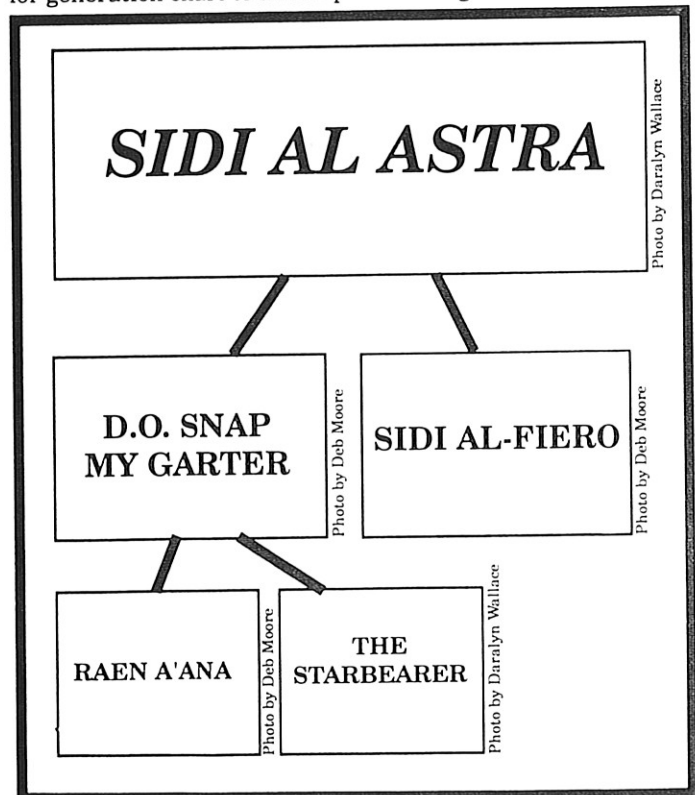
Can I Keep it Ma (second from right) and her plethora of foals together for a produce of dam class. Continuing from right to left: Sheli Out of my Dreams, Thibodeaux!, and Shlei Unexpected Dragon.

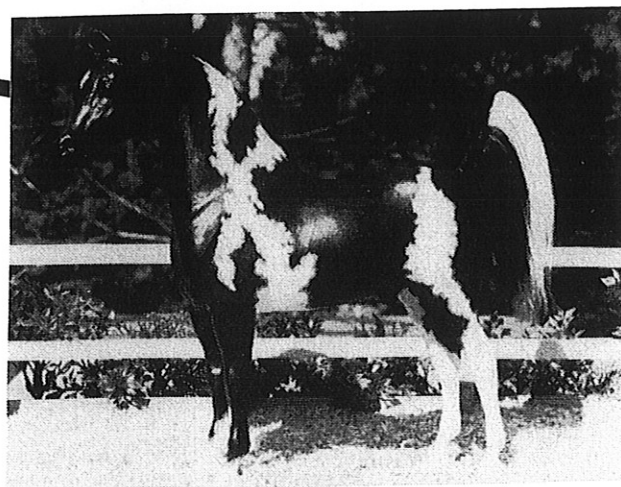
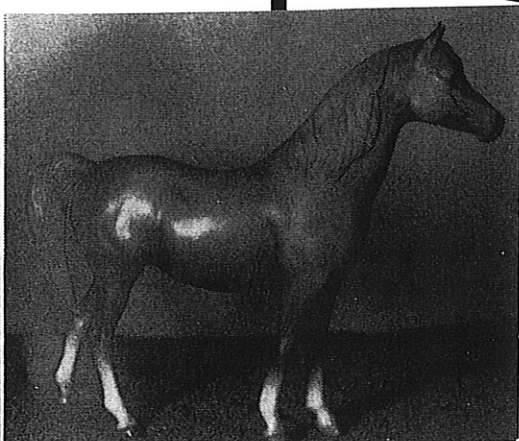
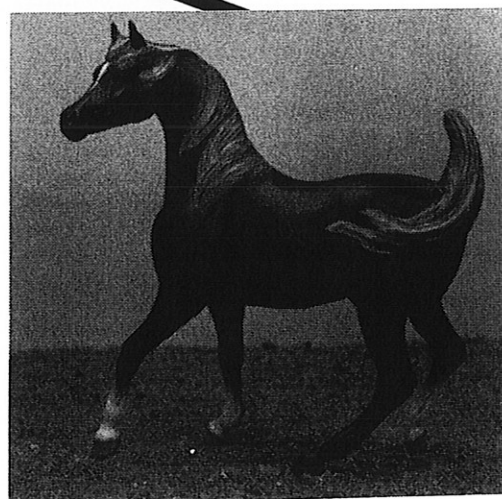
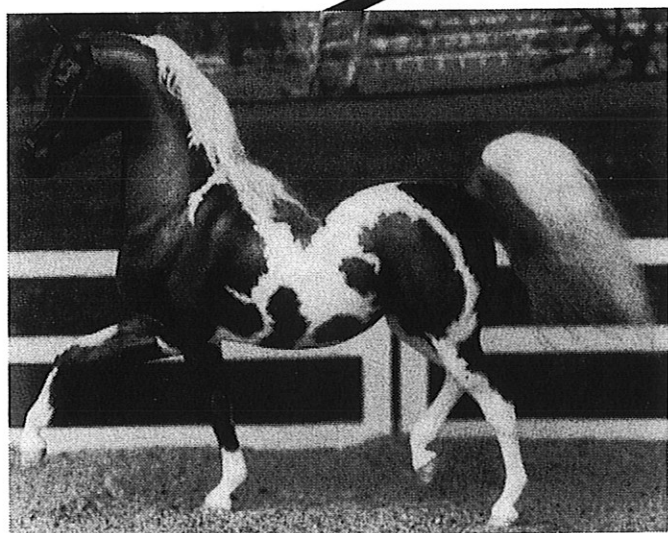
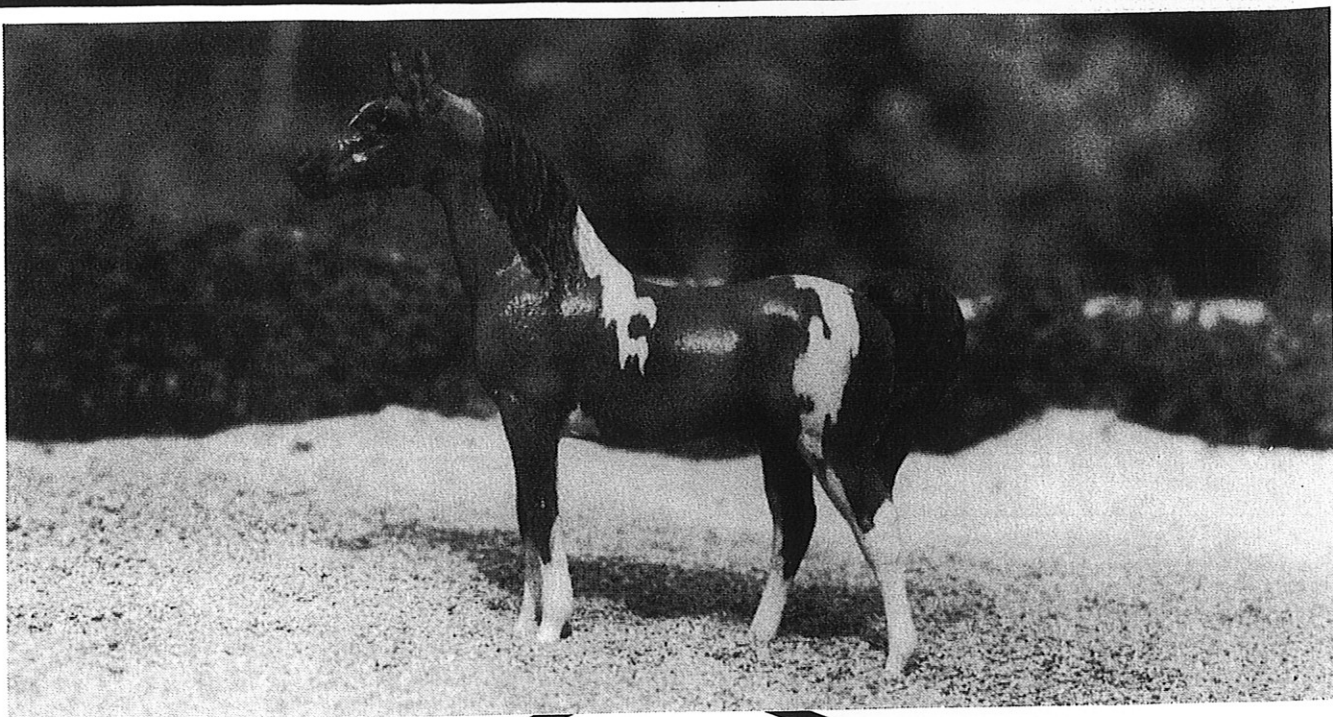
example, Moon Spirit is a 1987 Mustang Mare. Here is how I would have her record:

**MOON SPIRIT 1987 Mustang**

- Weanling Foal:
- Yearling Foal:
- 1991 Foal:
- 1992 Foal:
- 1993 Foal:
- 1994 Foal:
- 1995 Foal:

Just remember that even though it is time consuming, model horse breeding/pedigree assignment is fun and it is a great way to meet other model horse enthusiasts. It is also an excellent way to learn about different breeds and bloodlines of real horses. The page to the right shows an example of selective model breeding. The sires and dams were chosen for the color, coat pattern, and type. I'm going to start at the 'beginning' of this pedigree and show you how each generation builds on the last. Starting with Photo C, The Starbearer. The Starbearer is a black tobiano pinto Half Arabian stallion. He was bred to Raen A'Ana, Photo E, a chestnut Arabian mare. They produced D.O. Snap My Garter, a chestnut tobiano pinto Half Arabian mare. Note how the coat pattern was carried over from the stallion and the color from the dam. D.O. Snap My Garter was then bred to Sidi al-Fiero, Photo A, a chestnut Arabian stallion. This breeding produced Sidi Al Astra, Photo B, a chestnut tobiano Half Arabian stallion. Again the color and coat pattern have followed through to the offspring. Just a note: Sidi al-Fiero follows the chestnut x chestnut = chestnut rule as both of his parents are chestnut. You may be saying sure this worked, but how exactly did that pinto coloring get there to begin with? Let's take a look farther back in The Starbearer's pedigree. You will find that he traces back to a black tobiano pinto Mustang mare, making The Starbearer a 1 5/1 6 Arabian and 1 /1 6 Mustang. Many thanks to Daralyn Wallace for the photos of her horses' The Starbearer and Sidi Al Astra (see below for generation chart to match photos at right..





# HAGEN RENAKER COLLECTOR'S CLUB NEWS

## "IN THE SHOWRING"

Sponsored by the Hagen-Renaker Collector's Club

The HRCC Benefit shows, formerly Point shows open to members only, **are now open to anyone who owns an H-R (or dozens!) and would like to compete against the best H-R's out there!** You know how well they can do in open showing...now see how they stack up against others of their kind! Please note also, that \*customized\* H-R's are welcome to show, as well!!! H-R's are getting very popular with the artists, so here's a place to show them! We have also added a few performance classes, to address the small but growing interest in H-R performance!

Sometimes it can be difficult to identify the era that an H-R was made in, for showing purposes.... but don't let that intimidate you from entering your horses! Most of the classes are judged just like regular 'ol OF/Gender/Breed/Color. You have options on entering the specialty factory classes (such as "OF DW Monrovia", if you know for sure what it is. If you're not sure, you can simply note on the photo back to ask the judge to properly place your horse in whatever factory class they think it probably belongs in. Or, you may send the photo to Julie Harris, address below, who can get it ID'd for you.

**The HRCC is sponsoring drawings for all showers who enter any show from September through December, to be drawn at the end of the '95 show season (immediately after the December 15 show). \*Get this\*!!! There will be two drawings, one for showers who have been HRCC showers in the past, another especially for those new to the HRCC shows!!! For each show you enter, your name will be entered once in the drawings.....if you enter more than one show, you have more chances to win!! The prizes to be awarded for each drawing are your choice of the wonderful H-R Specialty Commemorative mare & foal, the Girl and Pony (these are both beautiful pieces!!), or a mini hippizanner in capriole. Take your pick!!!**

For anyone that is interested in joining the HRCC, please write to HRCC Director Jenny Palmer (address below) for further information. This is an active club with an informative bimonthly newsletter which features informative articles on H-R's, several featured horses/dogs/cats/minis/wildlife each issue with lots of photos, and of course saleslists, and show info! This club is a great place to be if you are interested in H-R's and learning more about them!!! For further information/questions on HRCC showing, or to volunteer to judge, please contact Show Organizer Julie Harris, address below.

Both shows are held together on the 20th of each month. The following is the judging schedule for the rest of 1995/early 1996:

November 20: Julie Harris, 4218 Interlake Dr., Tampa, Fla. 33624.

December 15 (early to avoid holiday rush): Brona Hicks, 6806 Walnut Grove Church Rd., Hurdle Mills, NC. 27541.

January 20: Barri Mayse, 7300 Mayse Dr., Chapel Hills, NC 27514. Barri can pick the photos up from the December judge, so enter 2 shows for the postage of one!

### HRCC Benefit Horse Class List (\$1/stable, or 25cents per model)

(Please Note: For those already showing, several classes have changed, please change your photobacks accordingly!)

- |                          |  |   |
|--------------------------|--|---|
| 1. OF DW Stallion        | 16. Open Morgan  | 31. OF Mini '80's-90's Issues                     |
| 2. OF DW Mare            | 17. Open ASB/TWH   | 32. Open Showmanship (headgear required)          |
| 3. OF DW Gelding         | 18. Open Mustang   | 33. Open At Liberty                               |
| 4. OF DW Foal            | 19. Open TB/WB   | 34. Open Head Study                               |
| 5. OF Mini Stallion      | 20. Open Draft   | 35. Open Horse/Rider (cutter, bedouin, racehorse) |
| 6. OF Mini Mare          | 21. Open Pony  | 36. Open OF White/Grey                            |
| 7. OF Mini Gelding       | 22. Open Longears  | 37. Open OF Brown/Black/Bay                       |
| 8. OF Mini Foal/Yearling | 23. Open Other Pure                                      | 38. Open OF Palo/Buckskin/Dun                     |
| 9. Open RRH DW           | 24. Open Other Mixed                                     | 39. Open OF Chestnut/Rosegrey                     |
| 10. Open RRH Mini        | 25. OF DW Monrovia (50's to mid 60's)                    | 40. Open OF Pinto/Appaloosa Color                 |
| 11. Open OF DW           | 26. OF DW San Dimas (mid 60's to late 70's)              | 41. Open RRH Any Color                            |
| 12. Open OF Mini         | 27. OF DW San Marcos ('80's)                             | 42. Open OF Matte Finish                          |
| 13. Open Arab            | 28. Open Collector's Editions 90's Issue (Encores, etc). | 43. Open OF Glossy Finish                         |
| 14. Open Color Breed     | 29. OF Mini Monrovia                                     | 44. Open OF Best Detail (Limit 5/stable)          |
| 15. Open Quarter Horse   | 30. OF Mini San Dimas                                    | 45. Open English Performance                      |
|                          |  | 46. Open Western Performance                      |
|                          |  | 47. Open Other Performance                        |

**\*\*\*MOLD CHALLENGES\*\*\***

Judges are encouraged to pick out 2 or 3 (or more!) molds seen in multiple at the show, and judge them against each other. For example, there are 8 Roughneck foals entered in the show. Judge to place them 1st, 2nd, etc., with explanations on the placings encouraged! Example... "1st Place=Snowball, a rare white Monrovia piece with superb detail, photographed to show off his extensive shading. 2nd=Blizzard, another monrovia grey, but this one with slightly less detail and the photo is a tiny bit blurry. Still wonderful, though..." and so on.

### HRCC Benefit Other Animal Classlist (\$1/stable, or 25 cents/animal)

- |   |   |                                  |
|---|---|----------------------------------|
| 1. Open Dog   | 6. Open Designer's Workshop             | 10. Open San Marcos              |
| 2. Open Cat   | 7. Open Mini/Specialty                  | 11. Open Matte Finish            |
| 3. Open Domestic/Farm Animal                                  | 8. Open Monrovia (may be split DW/mini) | 12. Open Glossy Finish           |
| 4. Open Wildlife/Exotic                                       | 9. Open San Dimas (may be split)        | 13. Open Best Detail - (limit 5) |
| 5. Open Pixie/Little Horrible/Black Bisque/Disney/Oddity,etc. |   |                                  |

**REVISED!**

**FOR SALE FROM BAYOU WORKSHOPS**

**NEW MODELS!**

SASE to Jamie Coughlin, 1525 Britton Rd., Lynn Haven, FL 32444-3311. (904) 265-8346.

**THE BAYOU WILL BE CLOSED AUG 8-23, MODELS WILL BE SOLD TO EARLIEST POSTMARK!**

We trade, send ALL lists. Looking for chinas, resins, customs. Trade models must arrive before item is sent, buyer pays postage. Prices are UPS ppd, add \$2 for PO del/ins. Overseas rates vary.

First price is **DISCOUNT** for one time full payment, price in ( ) is for **ALL Terms/Trades!**

Key to condition: NIB - new in box, 4 - excellent, may have fac. rubs on edges. 3 - Very good, may have few minor or faint marks. 2 - rubs/marks, too good to RR, 1 - RR prospect. **Sold AS IS, No Returns.**

**OF BREYERS**

**NOTE: PRICES HAVE BEEN REDUCED!!**

**POSTAGE IS INCLUDED!**

**L.PHASE** SR buckskin, bald face, 4, \$100 (\$125)  
**FAVORY** SR Europ. red roan Lippizaner, \$65.  
**PR.FLOWER** SR Europ. bay blanket L.Phase, 4+, \$60  
**DONKEY** Old, light grey, 4, chalky, \$20  
**L.PHASE** SR red roan, 4, sm. mark R hip, \$70 (\$90)  
**CLYDESDALE M/F** Disc. chest., both 4, set \$25  
**CLYDESDALE** Disc. Bay stallion, 4, \$18  
**LONGHORN** Brown w/white belt, 4, \$30  
**WELSH** Black SR cantering, 4+, \$30  
**OLD TIMER** Gl.d.g. 4+, OLD, \$65  
**MAN O' WAR** Trad. 3, \$20  
**BEAR FAMILY** Old brown (60's), 4, \$65  
**RIN TIN TIN** Matte, 3+, rub on nose, \$75 (\$95).  
**BOXERS** Matte, 3, \$20 Gloss w/chain, 3+, \$25.  
**POODLE** Matte grey, 3+, \$35.  
**SILVER COMET** SR Polo Pony, dap. grey, NIB, \$65 (\$85).  
**WATCHFUL M/F** SR L.Phase/stock foal set, alabaster/grey, Toys 'R Us, NIB, \$70.  
**TRAKEHNERS** Disc. medium bay, have 1 lighter. 4, \$40; have 1 darker w/spot on hip, few sm. rubs/marks, 3+, \$35.

**BALKING MULE**

**ABDULLAH**

**PAM**

**\*HYKSOS**

**CIPS**

**HALLA**

**SHETLAND**

**TWH/MID.SUN**

**LONGHORNS**

**SCRATCHING FOAL**

**JERSEY CALF**

**ANGUS BULL**

**HEREFORD BULL**

**BIGHORN**

**BUFFALO**

**JUMPER**

SR buckskin, 4, \$60  
 LE d.g. trak., some yell. 4-, \$35  
 Semi-gloss bay, 4-, \$40  
 LE, bronze Arab, \$60  
 LE Pinto Paso, 4+, \$45  
 blood bay, no star, 3+, \$35  
 Old gloss. palo. pinto, 4, \$30  
 Disc.blood bay, rub on hip, 3+, \$30  
 Brown, 4, \$40; Golden br., 4, \$40.  
 Blk./blkt. App, 4+, \$15  
 light brown, 4-, \$50.  
 Old walking w/halter, 4, \$65  
 Old gloss walking, 4, \$55.  
 tan, 4, \$35.  
 Old brown (60's), 4, \$30.  
 Disc. bay, no wall, 4, \$10.  
**ELEPHANT** 3, \$20.  
 Disc. medium bay, have 1 lighter. 4, \$40; have 1 darker w/spot on hip, few sm. rubs/marks, 3+, \$35.

**OF OTHER MOLDS AND GOOD STUFF!**

All matte/mint unless noted.

**HAGEN-REN.**

DW Unicorn #682 turning, missing 1/2 horn, gloss white, \$95 (\$120).

DW Unicorn #680, head down, rep. horn, gloss white, \$95 (\$120).

Mini Chimp mama/baby dressed, 312/313, \$15 set. More minis from 80's/90's, send wants or ask for list.

**METAL HORSE**

**FRANKLIN MINT**

**NORTHLIGHT**

**BESWICK DOGS**

Clas. size stand. parade horse (Morgan), molded on bridle, SILVER PLATED, on base, pic. \$85 (\$110).

Black Beauty, Disc. cantering, solid black porc. signed base, very detailed, great display piece, \$100 (\$125).

Hanoverian, SR bay blanket App, mended leg, champ, hal. pic. (List price is \$265!) \$215 (\$240).

Great Dane, #D968, Ruler of Ouborough, glossy, mint. \$90 (\$115).

Irish Setter, #D966, Sugar of Wendover, glossy, mint. \$65 (\$80).

**BESWICK HORSES**

ARABIAN, #1771, gloss brown, mint. \$90 (\$115); WALKING MARE, pony type, #855, gl. brown, mint. \$75 (\$95); SPIRIT OF YOUTH, matte dapple grey, #2703, mended leg, \$65 (\$90); MARE #976, gl. brown, mint, \$90 (\$115); LYING DOWN FOALS, #915, gl.br. mint, \$25, gl. pal. w/tiny ear chip, \$25. STANDING QH, repainted, see CJ Gambler on custom list below.

HUGE stack of used commission ribbons, all exc. cond., + some homemade, \$10 ppd. for all!

**RIBBONS**

**CUSTOM MODELS**

All have viewing photos! All LSQ unless stated otherwise.

BAYOU MODELS COME WITH A LIFETIME REPAIR GUARANTEE! SOME RESTRICTIONS APPLY.

**JOIE**

zebra RR by S. Kulwicki, from Trad. TB mare, walking, live placed 2nd, Flashy! \$75 (\$95).

**CAROUSEL HORSE**

white w/decorations, RR Cl.Blk.Bty by Sylvia Kulwicki, One of her best! \$65 (\$85).

**PHOENICIAN**

TB stal, R/R, (no hair) Cl.Swaps, stunning d.g., by Meixner/Milstead/Coughlin, lots hal. pic. \$40.

**CJ GAMBLER**

QP geld. RH Beswick QH by J. Raymond, rep. ear, fair LSQ, photo MCH! Great hal. pic. lots fair to good perf. by ?, VERY photogenic, \$80 (\$100).

**SIR SIMON**

Arab stal, RRH PAS w/Khemo head down/left, neck redone, flashy red chest., \$150 (\$175).

**HUNTER'S FLAME**

Paint mare, ch. overo, RRH Rug.Lark into cutting horse. Multi-Grand Live/Photo, full set western pic., a real Superhorse ready to win for you! \$400 (\$450).

**HOLD OLD BLUE**

App foal (geld.), black leopard, RRH St.SHF, legs corr., head left/down, proven wnr, \$95 (\$120)

**PRINCE DARIUS**

Half Arab stal, Cl.Blk.Stal. RR w/sculpted m/t, halter pose, chest. tob., \$65 (\$85).

**SHUDANZ**

Ara-App stal., RRH Trak w/PAS head, legs corrected, bay w/blanket, flashy, \$250 (\$275).

**MESA GREY**

Grulla mare, QH or Mustang, RRH SHM, jog w/head upright, perf. prospect! \$155 (\$180).

**MR. SPLASH BAR**

Paint geld., RRH SHS, long walk, head, neck low, bay tobiano, Loud! \$275 (\$300).

**SOPHISTICATE**

Hanov. mare, RRH Han. ext. trot on permanent plexiglass stands, flashy Bay, Nice! \$225 (\$250).

**SULTAN OF SIN**



NSH stal., RH "Status Symbol" resin, shaded bay tobiano, SHARP! sure Champ! \$300 (\$325).

**MIGHTY MERLE**

Paint geld. SM OH ST. RRH jogging, head forward, loud chestnut overo, \$75 (\$90)

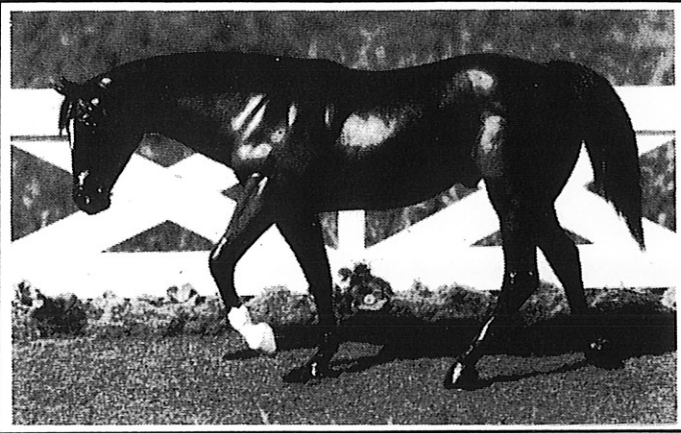
# Adahna Studios

Deborah Chenoweth · P.O. Box 2361 · Cody, WY 82414 · (307)587-6092

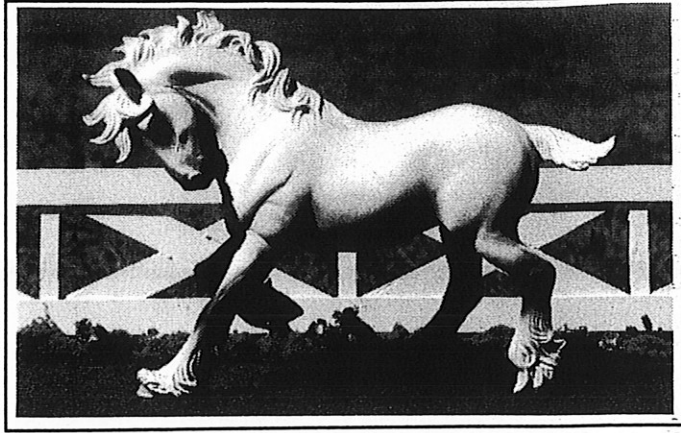
 No late, early, or collect calls. SASE with all inquiries, please. 

1. PROUD ARAB MARE: Remade head turned left and tucked, legs shaped up, topline leveled, tummy tuck. Repainted smoky golden chestnut with flaxen mane and tail. **\$165**
2. CLASSIC ARAB STALLION: Remade into properly stretched Arab halter stallion, conformation flaws corrected. Painted medium grey with ghost dapples, blaze, foresocks, darker grey hair mane and tail. **\$80**
3. STANDING STOCK FOAL: Remade hindlegs stretched, painted a black tobiano ASB filly. **\$50**
4. CLASSIC ARAB STALLION: Hindfoot remade back so he is trotting, head tucked, neck crested, head detailed into a Lipitt type Morgan stallion, painted red bay with star, short right foresock and right hind coronet, black hair mane and tail. **\$80**
5. STOCK STALLION: Remade head and neck lowered painted dark muddy dun, star, left foresock, black hair mane, tail. Super nice horse. **\$165**
6. CLASSIC MAN O' WAR: Remade with more Arab type as an Anglo Arab mare. Painted reddish chestnut, wide blaze, four knee-length socks, flaxen hair mane, tail. Photo shown twice as an Arab mare, twice Champ CM Mare out of large, competitive shows. **\$60**
7. QH YEARLING: Repainted only as a blue roan blanket Appy filly. Pretty and sweet. **\$70**
8. BUCKSHOT: Remade foreleg extended and down, painted dark buckskin with primitive markings Mustang stallion. **\$100**
9. DEB PRUIT-LENZNER STOCK MARE RESIN: Limited Edition of 200 nearly sold out. Currently selling for \$275.00. Painted red semi-leopard appaloosa, solid red points. **\$200**
10. CLASSIC BLACK BEAUTY BODY/CLASSIC SAGR HEAD/NECK: Painted dark rose grey, star, right foresock, left hindsock, black hair mane, tail. **\$80**
11. BREYER PORCELAIN SHIRE: Repainted stunning light dapple grey. Gorgeous! **\$325**
12. BHR MAIDEN MARE-IAN: Repainted awesome medium to light dapple grey, mixed mane and tail, pink muzzle. **\$85**
13. BHR MAINEN MARE-IAN: Repainted vibrant red bay, black points, star, four socks. **\$85**
14. HARTLAND BEDOUIN PRINCESS: Remade neck and head extended and out, head turned. Painted shaded black with original mane and tail, blaze, four socks. **\$165**
15. HARLAND 1994 jamboree Arab foal SR bay. **\$10**
16. LYING AND SCRATCHING BREYER FOALS: JAH SR bay blanket appaloosa. **\$75 for set**
17. CAM/CAS: 1984 SR old rose grey mare, bay stallion, no foal. **\$40 for set**

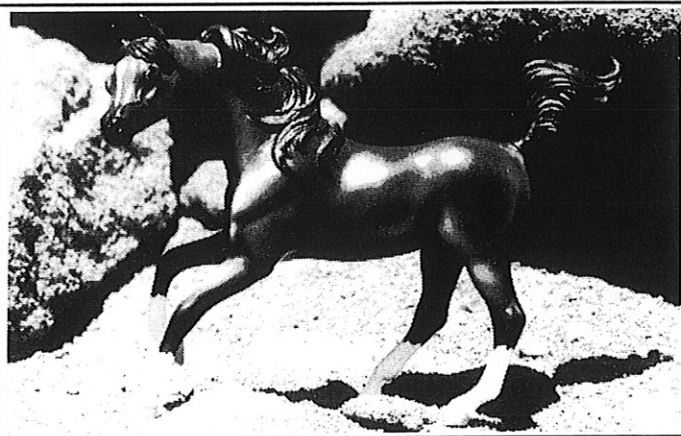




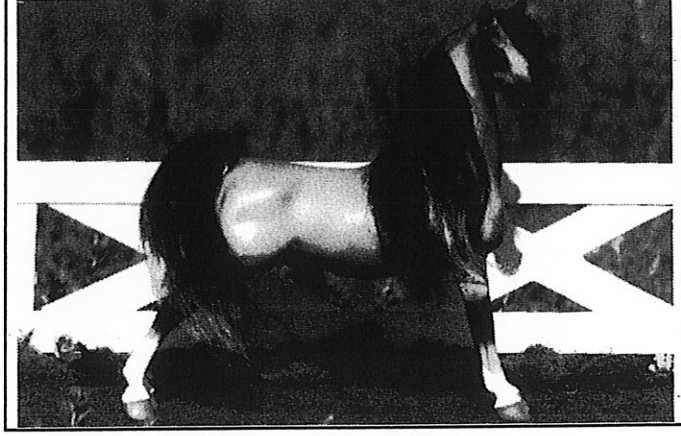
#5 Stock Stallion, description at left.



#11 Breyer Porcelain Shire, description at left.



#14 Hart. Bedouin Princess, description at left.



"Marksman" by Deb Chenoweth, see below.

**"Marksman"**

**Standing, stretched Morgan Stallion, Limited Edition of 55, eight to be retained by Adahna Studios. Custom orders available along with artist choice pieces (See above, bottom right photo). \$200 + \$8 S&H. Our thanks to Laura Behning for her pre-production assistance and advice on this horse. Below are Artist Choice colors of**

**"Marksman." They are completed and ready to ship.**

1. *Smoky Golden Chestnut*, star, left hindsock, two short foresocks, flaxen mane/tail, mane rolled left. \$200
2. *Chocolate Bay*, star, head lifted, black hair mane, tail. \$200
3. *Dapple Grey/Black*, blaze, left hindsock. Black hair mane and tail. \$200
4. *Shaded Black*, right foresock, star, black hair mane and tail. \$200
5. *Glowing Buckskin*, blaze, black hair mane, tail. \$200
6. *Medium Dapple Grey* (pictured above), four short socks, blaze, dark knees, black hair mane/tail \$200.

**New . . . A complete custom resin-casting service from Adahna. We will make a mold of that special remake or sculpture for \$300. There is no minimum number of resin casts you must purchase and you pay only for the number you order at the time of order. Only high-quality resin is used, and the mold captures every minute detail of your animal. \$35 per piece, plus \$8 S&H for one, \$11 for two, \$15 for three.**

**Please send SASE for more information.**

**Be watching for our next piece in our series of standing, halter-posed horses!**

# Full Color! Full Color! Full Color! Full Color! 64 Pages of Full Color!

## The Breyer Animal Identification Guide

Introduced at BreyerFest '95, this new 220-page book illustrates almost all of Breyer's animal models from the first Western Horse through the models produced in the first half of 1995! It also contains concise information about the regular and special run models - dates produced, color and marking information, and sources for special runs - all in an easy-to-use format.

**This beautiful soft-bound book is available now!**

*Plus get The Model Hunter's Price Guide, a 32-page companion booklet that gives the high, low, and average market prices for all the models described in the ID Guide (using the same format).*

Items	Quantity	Price	Total
The Breyer Animal Identification Guide		39.95	
The Breyer Model Hunter's Price Guide		9.95	
<i>Buy BOTH and get free shipping and handling!</i>		49.90	
<i>otherwise S/H: \$2 per ID Guide, \$1 per Price Guide</i>			
Tax (PA residents add 6%)			
<b>Total enclosed</b>			

Send Check or Money Order (payable to **Other Stuff**) to:

**Other Stuff**  
123 Hooks Lane  
Canonsburg, PA 15317-1835

**Mastercard and Visa accepted.**

Card #: \_\_\_\_\_

Expiration date: \_\_\_\_\_

Cardholder's Signature (required!):  
\_\_\_\_\_

Please send my copies to:

Name: \_\_\_\_\_

Address: \_\_\_\_\_  
\_\_\_\_\_

Phone number: \_\_\_\_\_

(PLEASE include phone number in case of questions!)

Yes, I would like my ID Guide autographed by the author.

For checks: item(s) will be shipped when check has cleared.  
Returned check fee applies.

**Dealer inquiries welcome.**



# FOR SALE:

**WHILE SUPPLIES LAST!**



**COMPLETE YOUR COLLECTION OF  
THE MODEL HORSE GAZETTE  
BACK ISSUES TODAY!!**

- Volume 9 No.8 May/June 1994 . . . The Sport Horse  
Volume 10 No. 1 July/August 1994\* . . . Pintos and Paints  
Volume 10 No. 2 September/October 1994 . . . Drafts/Longears  
Volume 10 No. 3 November/December 1994 . . . The Arabian  
Volume 10 No. 4 Januaray/February 1995 . . . SOLD OUT!  
Volume 10 No. 5 March/April 1995 . . . SOLD OUT!  
Volume 10 No. 6 May/June 1995 . . . SOLD OUT!  
Volume 11 No. 1 July/August 1995 . . . Horse Jumping  
Volume 11 No. 2 September/October 1995 . . . Harness Driving

\* Full Color Cover 10th Anniversary Issue

*Back issues are \$5 each, mailed first class only. These issues are dwindling, so don't delay if you missed an issue you'd like to add to your collection write today!*

*Please enclose a SASE with your order in case the issue you request has sold out.*

 **The Model Horse Gazette**   
7086 Ashlawn Drive  
Brecksville, Ohio 44141

by Lori Daniels

**Q:** When showing a model under western saddle, are both the cinch & flank strap mandatory, or is a single string/leather girth or cinch alone enough?

**A:** In western pleasure classes, if you have flank cinch straps hanging, there MUST be a cinch attached, as well as a connector strap to the front (and required) cinch. In current horse shows, there has been a trend towards short (approx. 4-5 inches) fancy silver-adorned hangers to fill up the rear strap vent. Some saddle companies are even producing saddles without rear cinch vents. Cinches can either be string or leather. Some saddle classes SHOULD have complete rear cinch assemblies; cutting, reining, roping, steer-dogging, barrel racing... anything which involves pulling the horse into a hard stop and or turn. The western saddle has a tendency to 'slam' the horse's back without a rear cinch to hold it secure to the horses' body.

**Q:** Are boots/splints allowed in Western Pleasure?

**A:** NO! As a performance rider, your skills should have you to be able to place that horses' legs anywhere, therefore making protective booting unnecessary... Boots are allowed in speed, cattle, and jumper classes.

**Q:** Can I show Spanish breeds such as Andalusian or Paso Fino in Western classes too or would it be a waste of my time? What about other gaited and traditionally non-western-type horses like American Saddlebreds, Tennessee Walking Horses, etc.?

**A:** A superbly done horse can be shown in any discipline... I hear there's a fabulous club for Spanish breeds and this is where you should concentrate... There are so many awesome stock horses out there that these classes are generally a judge's nightmare just placing the stock horses... Show your gaited horses in SPECIFIC gaited WP classes as they are generally too incorrect with leg placement to compete in a 'regular' WP class.

**Q:** My friend says that my Original Finnish Breyer Diablo mustang is just too thick

bodied to be shown as a mustang. Is this true? If so, what other breeds can I successfully show him as?

**A:** I show my OF mustang as a QH... He is a bit too domesticated to function as a true mustang but this is a widely diversified hobby... try showing him both ways under different judges, different shows to see where he does best and as what... Keep track of how he places as a mustang, and as say, a stock breed...

**Q:** What breed is best suited for the traditional size running Black Beauty?

**A:** Despite the fact this horse is on the wrong lead, he still is a tough OF shower... I see him as a solid TB or appendix QH(QH

**Q:** Is it better to approach a judge about a question in placing directly after the class is over or should one wait until the end of the day when it's no longer fresh in the judges memory?

**A:** Best to question them ASAP as the class is being cleared... KEEP IT SHORT AND ACCEPT WHATEVER THEY TELL YOU W/O A FUSS!!! They are the judge and you paid for their opinion. If it irritates you to hear what they say, don't ask! If it irritates you and you can fix it, DO IT!! Sometimes, as a judge, I find 10 AWE-SOME first place quality horses and I cannot even begin to compare what I call the second shelf horses to the one I HAD to give last but deserved a first place...

**Q:** What's the difference between a pinto and a paint?

**A:** A paint has QH or TB/QH combinations of bloodlines, have no gaited, draft, or pony in their lineage. A pinto can be draft, gaited, or pony influenced...

**Q:** What's the difference between a Pacer and a Trotter?

**A:** A pacer moves it's legs on the same side as it trots, and a trotter moves it's legs diagonally.

**Q:** What's a "Warmblood?"

**A:** A warmblood is a general description of cross-breeding to TBs or Arabians to improve upon a type. Cold-blood means a draft-type breeding was involved. Sometimes for improvements in the quality of bone density, a Belgian/Clydesdale/Shire is crossed. To refine the breeding, an Arab, TB, or of late, a QH is used.

**Q:** I'm attending my first live show this year. What should I wear?

**A:** Comfort reigns... no bikinis, evening gowns, or other odd clothing you wouldn't wear on a daily basis... A clean pair of jeans, sneakers, and a horsey T-shirt seems to rule in my area.



x TB cross).

**Q:** What breeds can I show my OF running mare and running stallion?

**A:** I like to see these horses listed as Morgans for the running mare and a TB/QH cross on the stallion...

**Q:** What kind of bits are used in correct harness headgear set-ups?

**A:** I drive my youngstock in a variety of snaffles, depending on their stages of training... a never-fail bit is the snaffle. Use a half-cheek snaffle or a slotted liverpool when ordering from a harnessmaker.