



THE MODEL HORSE GAZETTE



"Dedicated to the Promotion of the Model Horse Hobby!"

November/December

Volume 11 Number 3

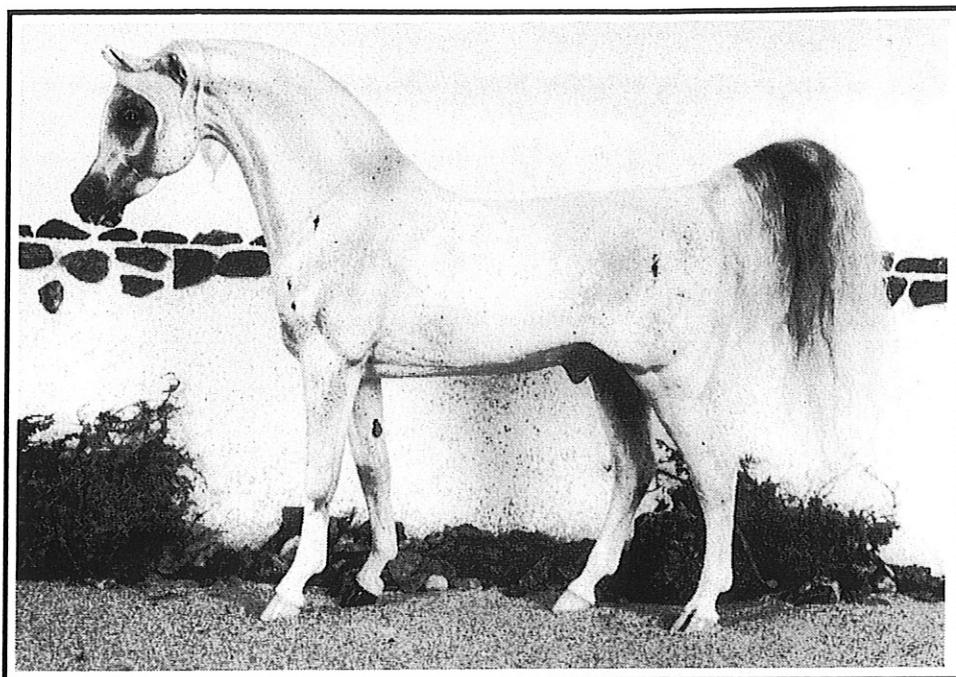
\$5.00



**INSIDE: THE MODEL HORSE GAZETTE
SPONSORS A WILD HORSE !**

TRIANGLE PRODUCTIONS

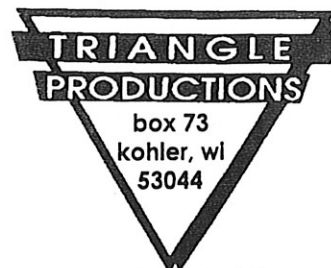
offering▼▼



▼▼limited edition resins

▼▼customized show horses

▼▼custom painting with two week guaranteed completion



thomas bainbridge
414.467.3094

RITA BOOTH STUDIOS
732 Pierce, Dept 25-MHG
Milton-Freewater, OR 97862-1435

- Stationery
- Ranch Stationery
- Rubber Stamps
- T-shirts
- Address Labels
- Business Cards
- Pedigree Forms
- Scratch Pads
- Post Cards
- Stickers
- Magnets
- Jewelry
- &
- much more



For the model horse lover . . .

Over 100 drawings of horses available on all items
(including rare breeds, unicorns, pegasus & carousel horses)
Dogs & Cats also available

Send \$1 US for s&h and receive a large catalog.
State your favorite breed for free sample

FOR SALE:

BREYERFEST '95 MEGO
NIB, ONLY \$90 PPD.

JAH STEEL DUST
NIB, ONLY \$90 PPD.

LOTS MORE! SEE OUR
CLASSIFIED AD IN THIS
ISSUE!

DAWN MARIE CALO
7086 ASHLAWN DRIVE
BRECKSVILLE, OHIO 44141

THE MODEL HORSE GAZETTE

America Online: TMHG or Internet: tmhg@aol.com
7086 Ashlawn Drive · Brecksville, Ohio · 44141 · (216) 526-1101 · Fax (216) 741-1181

EDITORIAL:

Editor-in-Chief/Publisher:
Dawn Marie Calo

Senior Assistant Editors:
Jamie Coughlin
Juanita Lewison-Snyder
Leah Posey-Patton

Contributing Editors:
Lori Daniels
Traci Durrell-Khalife
Debbie Moore
Linda & Bob Sturhann

Contributing Photographs:
Wanda Garner
Daphne Macpherson
Laura Zakroff

MANUSCRIPTS:

No material published in *The Model Horse Gazette* may be reproduced in whole or in part by any means without prior written consent from the editor. *The Model Horse Gazette* is not responsible for unsolicited material. All material accepted is subject to revisions by the staff of *The Model Horse Gazette*. Contributions (articles, original artwork, photos, etc.) are welcome and must be submitted by the original artist or in the case of photorights the owner or with the owners permission.

SUBSCRIPTIONS:

Third Class/U.S. Bulk Rate:
\$19.00 One Year
First Class U.S., Air Mail Canada, Mexico:
\$26.50 One Year
Air Mail to all other Countries:
\$30.00 One Year*
*All foreign subscriptions must be paid in U.S. funds.

Please Note: *The Model Horse Gazette* is not responsible for issues lost in the mail, the cost of replacement issues is \$5.00. You must notify the editor of address changes prior to the issue deadline - the Post Office does not forward Third Class Mail. If your subscription renewal does not reach the editor by the issue deadline, your subscription will experience a six to eight week delay. Your subscription will always begin with the next available issue. Back issues are \$5 each when available. **These rates are effective until November 15, 1995!**

PUBLICATION DEADLINES:

Always on the 15th of the month two months prior to the issue cover date. Deadline for the January/February issue is November 15.

ON THE COVER:

BLM Captured Mustang

Photographed by Dawn Marie Calo

Please see the Letter from the Editor and our ad on page 30 for more info on TMHG's sponsored mustang and how you can help the free-roaming mustang!

INSIDE:

Letter from the Editor	Page 4
Heard it Through the Haynet	Page 6
Live Show Scrapbook	Page 8
Long Ears A to Z	Page 9
TMHG Q & A Forum	Page 19
Guidelines for Breeding Model Horses	Page 20
Breedig and Basic Genetics	Page 21
Wilshire Woodshop	Page 23
Classifieds	Page 27

PLEASE NOTE: The current rates are effective only until November 15, 1995! If your renewal is received after November 15, 1995 (the deadline for the January/February Spanish Breeds issue), your subscription will be renewed for 5 issues instead of 6. All ads under the current rates which are received after November 15, 1995 will be returned. Please see outside cover for new rates or contact *The Model Horse Gazette* if it has been removed!

ADVERTISING RATES:

These rates are effective until November 15, 1995

The Model Horse Gazette retains the right to refuse any ad as we see fit. *The Model Horse Gazette*, its editors, or their families are not responsible for false or misleading advertisements.

All ads must have a half inch margin on an 8 1/2 x 11 page. *The Model Horse Gazette* retains the right to reduce any ad to fit ad space.

Non-Subscriber Rates:

Full Page	\$30
Half Page	\$18
Quarter Page	\$10
Eighth Page	\$6
Classifieds	\$0.03/word

Subscriber Rates:

Full Page	\$20
Half Page	\$12
Quarter Page	\$7
Eighth Page	\$3
Classifieds	\$0.02/word

Photo Screening Charges: (3x5) \$3, (4x6) \$5, (5x7) \$8



Letter from the Editor . . .

It's hard to believe, but here we are about to wish all of our readers a Happy Holiday Season!! That means Christmas and the New Year Year are right around the corner, and *The Model Horse Gazette* is about to enter its 12th year of publication!! Thank you again to all of our readers, advertisers and writers for getting us to where we are today, and here's hoping for an even greater year in 1996!

As a farewell to 1995 and an early Christmas gift to subscribers, we're giving you one last chance to renew your subscription before the rate increase for the 1996 year. Again, due to the rise in paper costs all across the industry and the recent rise in postage, the increase in subscription and advertising rates can no longer be put off. The current rates will be effective until November 15, 1995 which is the deadline for the January/February issue. After November 15, the new rates will take effect. Please see the color ad just inside you mailing cover for specific information. If you renew after November 15 with the old rates, your subscription will be renewed for 5 issues instead of 6. If you send advertisements with the old rates after November 15, they will be returned. Again, the staff here hopes you will see the small price increases worth the increasing quality and size of the magazine!

Speaking of deadlines, November 15, 1995 is also the contribution deadline for the January/February issue which is dedicated to Spanish Breeds. Many of our readers and supporting clubs of the Spanish Breeds have been pushing for this theme ever since my editorship, and with all the anticipated help, it looks like this will be another record breaking issue! Start looking through those photos of Andalusians, Lippizaners, Peruvian Pasos, Paso Finos, Spanish Mustangs, Lusitanos, Spanish Normans, Aztecas We want them all!

And now, back to this issue! We've conquered that forever puzzling issue of breeding MODEL horses! Even if you don't breed your model horses, this issue will offer *interesting* reading material to say the least!

The BIG NEWS for this issue (I've been biting my tongue this far to get the business out of the way first!) is that *The Model Horse Gazette* has sponsored a Mustang from the IRAM WILD HORSE SANCTUARY in South Dakota. Her name is Cirrus, and she was the first foal born in the sanctuary! She is a beautiful little paint filly, look for a photo of her in the next issue! And there's more! From now on, there will be an ongoing All Halter

Benefit Show series through the Gazette with all proceeds to go to The IRAM Wild Horse Sanctuary! I will be the judge for the first show, but we need judges for the rest of the shows this year (judges cannot enter shows they judge, but can enter the others!). Judges will receive a full page ad or a full year subscription to *The Model Horse Gazette* ! Please contact us ASAP if you are interested! Each show's first place winner in the Mustang Breed class will win a Wild Horse Sponsorship kit. If you enter one of the first five shows of the year, you will be qualified for the year-end show (usually to take place at this time, but we couldn't wait another issue to start this, so you have an extra chance to qualify) with huge prize awards! Please enter and help make this benefit series a HUGE success - remember ALL proceeds go to the Wild Horse Sanctuary!! And TMHG pays the postage on prizes! It's all halter, so no excuses, get those horses and cameras and start snapping!! The entry fee is \$1 per horse or \$5 per stable . . . First show is December 8, 9, and 10; see the ad on page 30 of this issue! Remaining 1996 show dates needing judges: February 7, April 7, June 7, August 7, and October 7. December 7, 1996 will be our first Year-End Awards Show.

Dan M. Polo

HAPPY
HOLIDAYS
FROM
THE STAFF AT
THE
MODEL HORSE
GAZETTE!



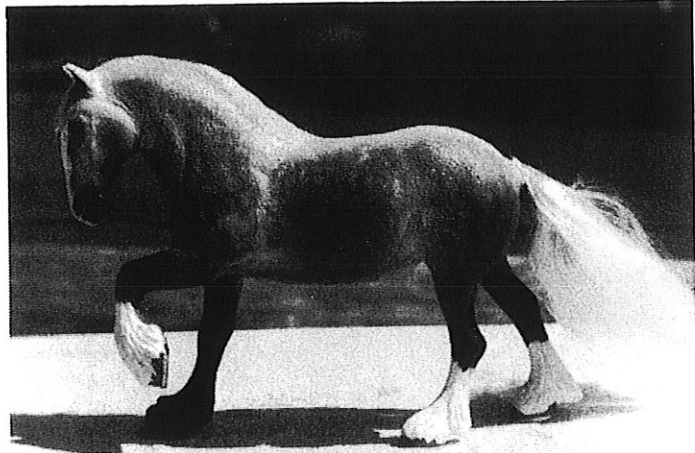
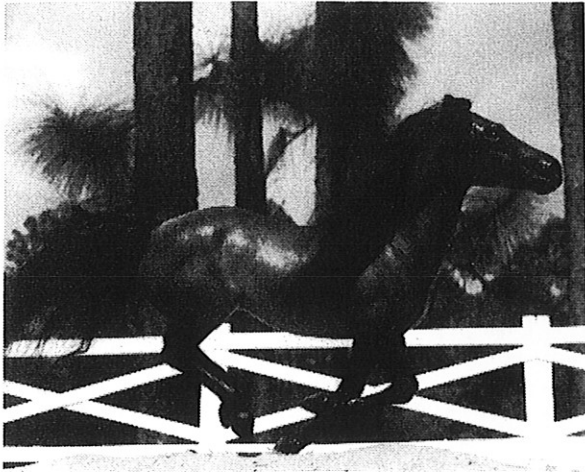
Saleslist

October 1995



Anne McMorrow/ CSC Box 1148/ Castleton VT 05735

Rising costs of college and textbooks are forcing me to offer my best models. Send SASE for viewing photos or questions. Please add \$4.00 to your order for postage. Money orders will warrant the fastest response.



Polo Pony r/h by Wanda Garner to a dappled golden bay mare with green glass eyes. Done in oils with a rooted mane (mohair) and metal shoes. Incredibly stunning individual. Never live shown but a photo show champ. Horse does not come with a base, supporting hoof has a metal peg that can be slipped into a nail-size hole in your shelf, mounted on a base, or replaced with an acrylic rod. Small shiny spots on left neck (hairspray?) otherwise excellent condition. Comes with numerous halter photos. \$50

Little Bit Draft Horse r/r/h by Julie Bullock to a gorgeous dappled grey gelding. Ears now forward, mohair mane and tail (rooted mane), shod. Tail is ground-sweeping length but now braided and rolled into a cute drafter bob. Excellent condition. Halter photos and negative. \$25

Royal Doulton DA58 WMP Thoroughbred in glossy mahogany bay. Trad sized gelding with braided mane and banged tail. A classic conformation hunter. Imported from England. Absolutely mint condition in original box. Viewing photo only. \$70

Classic Size Bay from Breyer fine horse family. Small factory rough spot on right hind fetlock, otherwise excellent. \$10

Hagen-Renaker Mini Lippizan on base. Mint condition. \$6

H-R Mini Canterng Unicorn head down. White with gold horn and hooves. Discontinued in 1980's. No breaks, some surface crackling but still in very nice condition for a collector or unicorn aficionado. \$15



HEARD IT THROUGH THE HAYNET!

NEWS FROM THE HAYNET AND BEYOND . . .

BREYER NEWS!

The newest news off the 'net comes from the Midwest Breyer Round-up in Detroit straight from the mouth of Peter Stone himself. Good news first - Big Ben, the Canadian Jumper ridden by Ian Miller, will join the 1996 line of Breyer Horses and will be released at the Canadian Show Jumping Team Olympic Trials at London, Ontario in Spring of 1996. And now for the sad (?) news, Peter announced the discontinued models for the coming year . . . Man O' War, Secretariat, Rugged Lark, Khemosabi, Misty's Twilight, Pluto, Fresian, Gem Twist, Ideal Quarter Horse 1995, Black Beauty, Tesoro, Clydesdale, Just Justin, Double Take, Rough N Ready, Freckle Doll, Ranger, Promises, Tara, and Scribbles. Time to stock up on those models you didn't get for your birthday, valentines day, anniversary . . . !

The Ideal Quarter Horse on Q2 during the collector weekend August 18-20 was NOT the regular run version of the model! Here's the scoop . . . The Q2 Ideal Quarter Horse is an edition of 192 (per Stephanie M. at Just About Horses/Reeves), and its number is 707995. This Special Run, after the fact, was the first run of the model which was rejected by the American Quarter Horse Association due to the dark red chestnut shade instead of a more golden brown. Breyer had to go back to the drawing board with a new shade and there you have #497, the regular run of 1995 Ideal Quarter Horse.

The JC Penny's Christmas Catalog is out, and here are the numbers for the Special Runs: Serenity Set (#XU-671-2046A) \$34.99 - Buskskin Grazing Mare and Foal; Dressage Horse (#XU-671-2194A) \$27.99 - Black and white pinto Hanoverian; Racehorse Set (#XU-671-2079A) \$49.99 - Phar Lap in light dapple grey, Pacer in bay, Stock Stallion in chestnut; StableMate Set (#XU-671-2079A) \$19.99, 12 various SR color SM's. The catalog order number is 1-800-222-6161. Ask for operator JP95 and you will get an additional 15% off!

Peter Stone announced that the Tennessee Walking Horse Association wants a Special Run model next year . . . a black TWH. Peter stated that this mold would differ from the regular run "Midnight Sun" by different colored ribbons, and possibly white markings.

On a sad note, Grayingham Lucky Lad, the live representative of the 1993 BreyerFest model, passed away on August 21, 1995.

CLEO CANCELLED!

The Central Leatherstocking Equine Open, set to take place September 15-17, 1995 was cancelled just two weeks before the event. The Special Runs Exterminator and Peanuts II were cancelled as well due to production problems at Reeves. George Taylor and Mego were even scheduled to make a guest appearance . . . but even with let-down after let-down the hobby has offered him, he is scheduled to appear in his home state of Texas at The Lone Star Live September 30. The H-R Special Run is still on, and is available by mail from The Tack Connection, c/o Terri Dennis, RR#3 Route 22, Patterson, NY 12563. The cost for model (Grey pony w/o girl, black points), is \$20 (not the previous \$12). The responsible parties for cancelling CLEO are Craig and Linda Hill's Collector Toys, 1149 Front Street, Binghamton, NY 13905, (605) 771-0665. You can contact them concerning refunds for models, etc. Michelle Bacon, CLEO committee member mentioned that Breyer intended to add Extermintor (Gem Twist mold in Chestnut) to the 1996 line.

GOOD READING!

Carol Williams has announced the second printing of Color Formulas & Techniques soon to be available! The book is 436 pages, 8 1/2" x 5 1/2" format, 3 ring-bound, with a set of 60 formula cards. The cost of the book is \$38 ppd, VISA and Mastercard accepted. for more info contact Carol Williams, c/o Rio Rondo Enterprises, PO Box 111, Copeland, KS, 67837, (316) 668-5421.


Gail Fitch has written a book on Hartlands, called Hartland Horses and Riders. It is \$75 postage paid. This information was inadvertently removed from the last issue of "Heard it through the Haynet." You can contact Gail about the book or her newsletter, Hartland Market (\$7/year), at 1733 N. Cambridge Avenue, Milwaukee, WI 53202.

There's a new literary horse mag on the market (not model related), published three times a year, "*The Stable Companion: The Literary Magazine for Horse Lovers*." A subscription is \$24 per year or you can get a sample issue for \$7. The Stable Companion, P.O. Box 6485, Lafayette, IN 47903.

GOOD WATCHING!

There will be a new pay cable channel, Premier Horse Network (PHN) launched in early 1996. This will be an equestrian network that will feature national and international horse shows, rodeo, racing, equine news, clinics, etc. The network will retail for around \$7 per month. The Premier Horse Network, 2740 West Magnolia Blvd, Burbank, CA 91505. Tel: 818-955-9000 or Fax: 818-955-9051 or E-mail: phn@cyergate.com or WWW site: <http://www.cybergate.com/horsenet/premier>.

MORE MEGO!!

Melody Snow has made an arrangement with George Taylor so that Mego fans who were unable to see Mego at BreyerFest, etc. can purchase an 8 x 10 full color reproduction print of Mego autographed by George Taylor, Mego's owner. Each print comes with a personal invitation to visit Mego and George Taylor in Texas and have your model signed. The offer to sign the horses is only open to visitors who show up in person to visit Mego at the ranch. The cost of the photos is \$10 plus \$1 shipping and handling. Check out her ad in this issue! 

WHOA
LOOK!



FOR SALE

GOOD
BUY\$

- 1.) BREYER #3095 Performance Horse with Brenda Breyer doll and accessories. Excellent condition. \$45.00
- 2.) BREYER #700894 "Black Beauty" Gift Set - not removed from box. Excellent condition. \$45.00
- 3.) BREYER #134 Bay Running Foal. Good condition - a little overspray from tail and hoof color. Disc. 1988. \$10.00
- 4.) BREYER #81 Brownish-Gray Donkey. Good condition - tiny rubs on hooves and eartips. Disc. 1978. \$20.00
- 5.) BREYER #3095 Performance Horse only. Good condition - little rubs on belly, right side and eartips. Disc. 1986. \$15.00
- 6.) HARTLAND Grazing Mare and Suckling Foal. Beautiful shaded Bays! Mare is approximately 3 1/2" at withers. Good condition - foal has two minor rubs on right side. \$20.00
- 7.) HARTLAND Horse & Rider. Solid Brown horse with molded on tack; stands approximately 6 1/4" at eartips. Rider is a solid rusty brown color, holding a lariat at his right side with both hands. Both are in excellent condition. \$15.00
- 8.) GRAB BAG: Consists of 9 models. All for \$9.00
 - 2 Rubber prancing horses from the 50's. 3 1/2" tall. Rust colored with black on their backs. Good condition.
 - 1 Hard rubber prancing horse. Medium brown, from the 50's. 3 1/2" tall. Good condition.
 - 1 Victoria, China. Palomino, laying down. 5 1/2" long. Good condition.
 - 2 Vcago, China. Bay, walking. Excellent condition. Palomino, prancing. Broken/repared fore leg. Both 3 1/4" tall.
 - 2 Kelvins, China. Palomino, prancing. Flecks in paint. 4" tall. Palomino, walking. Tiny paint flaw on back. 4 3/4" tall.
 - 1 Metal 2 1/8" tall. Tan. Molded on tack. Good condition.



Please add for postage \$3.00 for the first model, and \$1.00 for each additional model. Add only \$3.00 for postage for "Grab Bag". Send S.A.S.E. and check or money order to: Kelly Swallow, P.O. Box 374, Madison, NE. 68748.

WANTED: 1984 J.A.H. special run Sorrel ASB Weanling.
"Touch of Class" and "John Henry" molds for remaking.



ATTENTION NORTH LIGHT COLLECTORS!

THEY'RE HERE AT LAST!

THE LONG AWAITED PERCHERON HAS ARRIVED IN MOUNT UPTON AND IS SHE A BEAUTY! STANDING NEARLY SQUARE WITH HER HEAD UP AND TURNED TO THE RIGHT, SHE IS READY TO SHOW IN DRAFT CLASSES, AS A CARRIAGE HORSE, OR EVEN AS A HEAVY HUNTER FOR A LARGE RIDER. THE PERCHERON IS AVAILABLE IN WHITE GRAY, BLACK, AND DAPPLED GRAY.

WILSHIRE IS THE FIRST RETAILER IN THE COUNTRY TO RECEIVED THE PERCHERON. WE HAVE TAKEN BEAUTIFUL COLOR VIEWING PHOTOS OF THE BLACK AND THE DAPPLED GRAY. IF YOU WOULD LIKE TO SEE JUST HOW SPECTACULAR THE NORTH LIGHT PERCHERON IS, SEND A SASE TO:

WILSHIRE MINIATURES
 RR 1 BOX B7 MT UPTON NY 13809
 VOICE: (607) 764-8218
 FAX: (607) 764-8219

NEWS BULLETIN: SOON WILSHIRE WILL TAKE A STEP INTO THE PRESENT. YEP, WE'LL BE ON THE INTERNET AS SOON AS I CAN GET MY MODEM UP AND RUNNING!



LIVE SHOW SCRAPBOOK!



NW EXPO JUNE 10, 1995

By Traci Durrell-Khalife

Twenty-six entrants competed at NW, a NAMSHA™ member show, on June 10 in Corvallis, Oregon. Judges were Beth Martensen -- Novice, Betsy Snyder -- Open OF, and Jeannie McCarthy -- Open CM. Jeannie hosted and judged the first four Oregon Live Shows in the early 1980s. It's great to see her getting involved in the hobby again.

Liz McMaster won firsts in Painting and Mixed Media categories of the Equine Art Gallery. Several oil paintings and photo enlargements were also on display.

A special treat this year was a display of seven Fannie Branson models owned by Judy Berends of Dallas, Oregon. Fannie lived on the Oregon coast and carved horses of balsa wood. She then covered them with hides of unborn calves for an extremely realistic look. Most of her creations, made in the 1930s to 50s, were about three times the size of Traditional Breyers. They have glass eyes and soft hair manes and tails. Fannie also made and tooled leather tack for some of her horses. Her work has gained national and international recognition. There was even a Fannie Branson Model Horse Museum in Agate Beach, Oregon. Today, her horses are treasured collectables.

Evelyn Holden won the Scene class with her "Queen Victoria Driving in the Park." The Queen was in a carriage pulled by four black Adios models and surrounded by attendants. Evelyn's "Mule Bam" setup took 2nd.

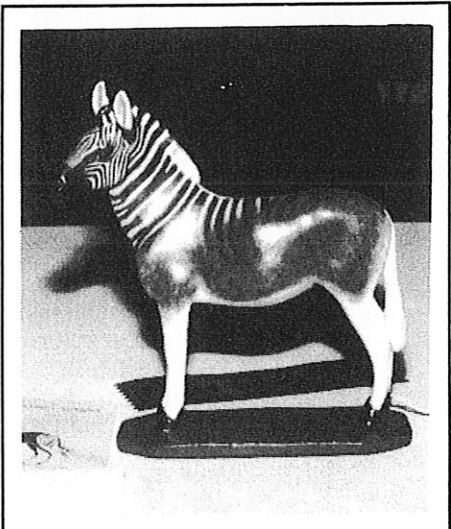
A total of 19 entries provided tough competition in the collectors classes. Winners were: Brandt Wilkowski -- Breyer Youth; Kellie Hollenbeck - Breyer Adult; Julie Wilkowski - Other OF; Daphne Macperson - CM.

Novice Grand Champion: *Cactus Dove*, Charlotte Mortensen; **Open Original Finish Grand Champion:** *Cat Ballou*, Laura Pervier; **Open Customized Grand Champion:** *Let's Go Crazy*, Cari Zisk.



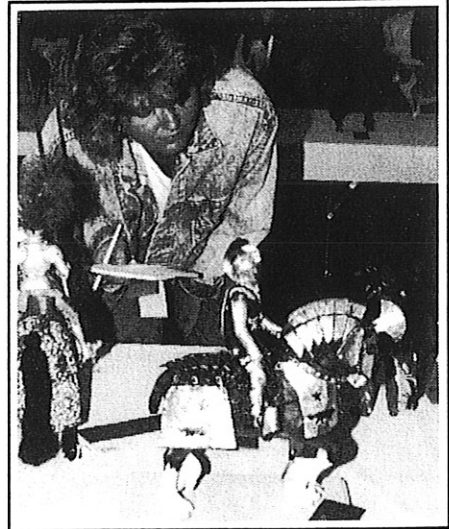
Daphne Macpherson's winning CM collection entry.

Photo by Traci Durrell-Khalife



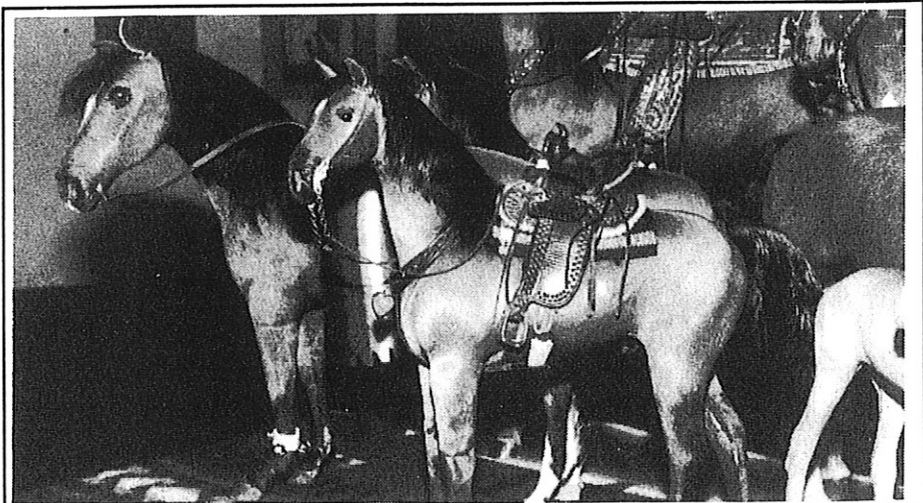
"Vrolijkheid" owned by Juanita Snyder. Original sculpture Quagga by Dr. Rau, South Africa.

Photo by Traci Durrell-Khalife



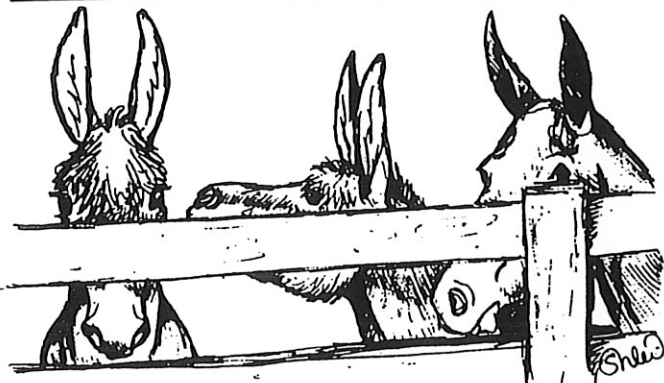
Beth Martensen judges entries in the Doll Class.

Photo by Traci Durrell-Khalife



Hide-covered horses displayed by Judy Berends.

Photo by Traci Durrell-Khalife



LONG EARS A TO Z (ASSES TO ZEBRAS)

LONG EAR GIFTS & SUBSCRIPTIONS

It's about that time of year again folks. Roasting chestnuts, twinkling lights, eggnogg, and mistle toe. And of course those long lines at department stores during the Christmas rush. That's one reason I like to shop by mail, just me, the old armchair, and a nice catalog! Anyways, I've started a new tradition this year that I'd like to share with you. Giving yourself a Christmas gift. Isn't that a nice idea? Afterall, you've been good all year, you deserve getting something you REALLY want. And if it's something "long ear-y" that you're craving, boy do I some some ideas for you!

MISCHKA FARMS • N. 8246M Easterly Road • Whitewater, WI 53190

These guys make some really beautiful equine calendars in full color with all sorts of little drawings thrown in. Specify *Draft Horse* or their infamous *MULE* calendar line. Cost is \$8.50 postage paid in the United States or \$10.50 postage paid in Canada. Be sure to mention it's the 1996 calendar line you're interested in.

CRITTER CRAFTERS • P.O. Box 328 • Descanso, CA 91916

Source of some WONDERFUL mule & donkey clothing, jewelry, toys, stationary, bumper stickers, etc. For catalog send SASE plus \$2 (refundable on your first order).

SHAMROCK HOLLOW • 743 W. Main Street • John Day OR 97845

A source for cute mule t-shirts, calendars, bumper stickers, cartoon books & more. Send for free brochure!

CHAPIN CERAMICS • 7080 Lake Dr. • Coloma MI 49038

Offer a nice strapping 10" high ceramic mule model for \$30/ppd. Choice of harnessed, saddled, or packed. Color choices: brown, black, or grey. All in all, not a bad looking model.

E.M.B.E. ENTERPRISES • Rt 1 Box 112-AA • Rollingsstone MN 55969

Source of mule & donk shirts, hats, posters, mugs, plates, etc. Send for free Catalog!

PERMANENT IMPRESSIONS • PO Box 304 • Jacksontown OH 43030

Source of Mule & donkey gifts, apparel, & more. Send \$3 for a color catalog.

HEE HAW BOOK SERVICE • c/o American Donkey & Mule Society • 2901 N. Elm St. • Denton TX 76201

The living, breathing variety, buty they also provide book services to anyone wanting to learn more about long-ears. Send LSASE for copy of their free book catalog. Here's a sampling of what they carry. \$1 postage for 1st book, 60¢ per additional book.

- "The Definitive Donkey" by Paul & Betsy Hutchins —\$10
- "The Modern Mule" by Paul & Betsy Hutchins —\$6
- "The Mule" by Harvey Riley —\$5
- "Your Donkey" by Ruth Harris —\$10
- "Intro to Donkeys" (a pamphlet) —\$2
- "Save the Poitou Donkey" by the Donkey Sanctuary —\$13
- "ADMS Judges & Inspectors Guide" —\$3
- "Wild Horses" by Zoo Books, Asses to Zebras —\$3
- "How To Carve Realistic Mules" by Lester Hunt —\$5
- "Training Mules & Donkeys: A Logical Approach"
by reknown trainer Meredith Hodges —\$37

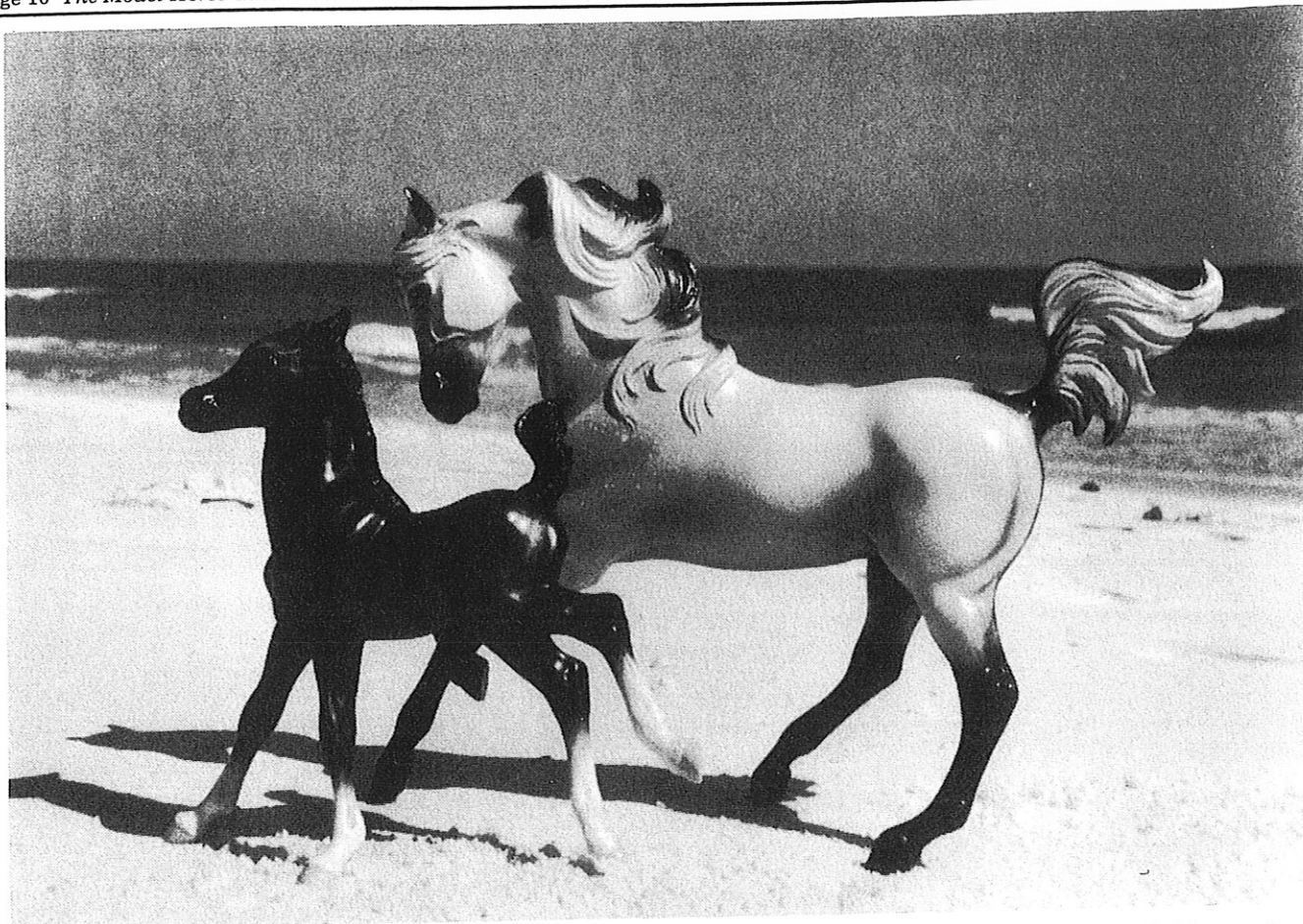
Another terrific idea to celebrate the comeing year is with a gift subscription to a REAL Long-Ear magazine! There are several fine publications from which to choose:

THE BRAYER (official ADMS publication)
2901 N. Elm Street
Denton, TX 76207
\$18 year/USA \$25 year Canada (Quarterly)

SADDLE MULE NEWS(5 issues/year)
Rt 2 Box 180-D
Boyd TX 76023
\$15 yr/USA \$25 year/Canada

MULES&MORE(6 issues)
PO Box 460
Bland MO 65014
\$15 yr/USA \$24 yr/CAN

... Continued on page 26



Photograph by Wanda Garner/Illusion Stables & Studio

The enticing couple above are Illusion's La Sylphide and Illusions's Spellbound, a dapple grey Arabian mare and her black colt. They are the original finish Hartland set #233 "Bedouin Princess & Blessing." The pair was photographed at Gulf Islands National Seashore in Pensicola, Florida by owner Wanda Garner of Illusion Stables & Studios.

BREEDING THE MODEL HORSE

by Debbie Moore

Some people, myself included, enjoy 'breeding' model horses. No, we don't actually put a model stallion with a model mare in the hopes of 340 days later finding a model foal. Though with the increase in model prices, wouldn't that be a nice thing to have happen? When I talk about breeding model horses I'm really talking about the assignment of pedigrees to my models. I take Model X, and like to say it is the foal of Model Y and Model Z, Or I might take Model X, and say it is the foal of Real Horse Y and Real Horse Z — either way, using models or real horses, I have assigned a pedigree to my Model X. This is model horse breeding.

Pedigree Assignment requires research, paper work, time, and patience. I like to research each breed that I assign pedigrees to. If, for example, I'm going to work on my Arabian models, I want to know more about the different bloodlines available and which of those bloodlines produce halter horses, western horses, park horses, racing horses, etc. After I decide which lines I like then I can begin to choose model or real horses of those bloodlines to be the parents of my models.

Here are a few guide lines to help you with your model breeding program.

1. **COLOR REQUIREMENTS:** I don't have enough room to cover the genetics of horse colors. There are several books available on this subject. To keep things simple I usually see what the color is of the horse I'm working on. Then I choose at least one parent to have the same coat color. In the case of working with color breeds I take this one step further. I also look at the foal's coat pattern and I find one parent with a similar coat pattern. One rule of color that everyone seems to agree on is that a chestnut/sorrel stallion bred to a chestnut/sorrel mare will always produce a chestnut/sorrel foal. Another generally accepted rule is that for a horse to be grey, it should have at least one grey parent, and that two grey parents will almost always produce a grey foal.

2. **BREED REQUIREMENTS:** Most real breed associations have closed stud books. This means that only foals produced by breeding two registered parents together may be registered. Some exceptions to this rule include some of the Warmblood registries that require visual inspections and passing of performance tests; these registries will accept any horse that can pass these