

MODEL HORSES UNLIMITED

MAY/US

1995 SUBSCRIPTIONS/ U.S.A.

MODEL HORSES UNLIMITED offers its Members:-

- FREE! MONTHLY NEWSLETTERS (by AIR) with Club and Model News and lots of shows!
- FREE! LIST OF MEMBERS and inclusion in this List!
- FREE! LIST OF MODEL HORSE STUDS and inclusion in this List!
- FREE! LISTING OF SHOWS and other activities in the monthly DIARY!
- FREE! ADVERTISING OF CLUB BENEFIT SHOWS (100% proceeds to The Club)!
- FREE! UNclassified ADVERTISING!
- FREE! GRAND POSTAL SHOW each year during the Summer!
- FREE! 'Horse of the Year' PHOTO SHOW with Regional Qualifiers Spring & Autumn!
- FREE! GRADING SCHEME for all your models, with Certificates, Ribbons and Rosettes!
- FREE! VOUCHER for APIS Model Horse or Pony (Original or Kit)!
- FREE! ZIP WALLET to keep your Newsletters, Magazines and Lists together!

PLEASE GIVE COLOUR CHOICES FOR ZIP IN ORDER OF PREFERENCE: RED, BLUE, YELLOW, GREEN; colour cannot be guaranteed

- FREE! THREE MAGAZINES PER YEAR with FULL COLOUR COVERS!

SENT WITH YOUR MARCH (STUD ISSUE), JULY (SHOW ISSUE) AND NOVEMBER (CHRISTMAS ISSUE) NEWSLETTERS!

- ANNUAL CHAMPIONSHIP (Live) SHOW held annually during the summer holidays!

1995 SHOW TO BE HELD IN EAST ANGLIA, 26th AUGUST

Lowest entry fee of most (if not all) the larger live shows
(and many of the smaller ones!)

1995 SUBSCRIPTION:

From date of joining UNTIL DECEMBER 31st

\$34.00 inclusive of postages

As previously we are accepting **INSTALMENTS**: the first instalment of **\$20.00** payable on joining; the second instalment of **\$14.00** payable by JULY 20th to ensure entry to The Live Show. We can accept American dollars **CASH ONLY**. If you choose the instalment method please ensure your payments arrive in time to avoid missing any Newsletters!

Also - I *may* be able to accept trades, but please let me know first what you are suggesting (with s.a.e.) **BEFORE YOU SEND** and I am sure we can come to some arrangement! Items like Special Runs are always welcome - please suggest!! Also Live Show Quality tack and custom work is acceptable. 'Cheapie' models for customising may be considered.

You may of course pay by £ sterling Money Order, either in instalments or one payment: please write for rates!

PLEASE SEND SUBSCRIPTION with **YOUR NAME, ADDRESS, TELEPHONE NUMBER** (this need not appear on the List: please tell us if you would prefer it not to) and **MODEL HORSE INTERESTS*** to:

MODEL HORSES UNLIMITED

5 BRINGTON ROAD LONG BUCKBY NORTHAMPTONSHIRE NN6 7RW ENGLAND

* If you do not wish this information to appear in the Newsletter and List of Members please inform The Club at time of joining.

PLEASE NOTE THAT THE ABOVE INFORMATION WILL BE HELD ON **PEGASUS**, THE CLUB'S COMPUTER, FOR CLUB INFORMATION ONLY. IF THIS IS CONTRARY TO YOUR WISHES PLEASE INFORM THE CLUB AT TIME OF JOINING.

WILSHIRE WOODSHOP

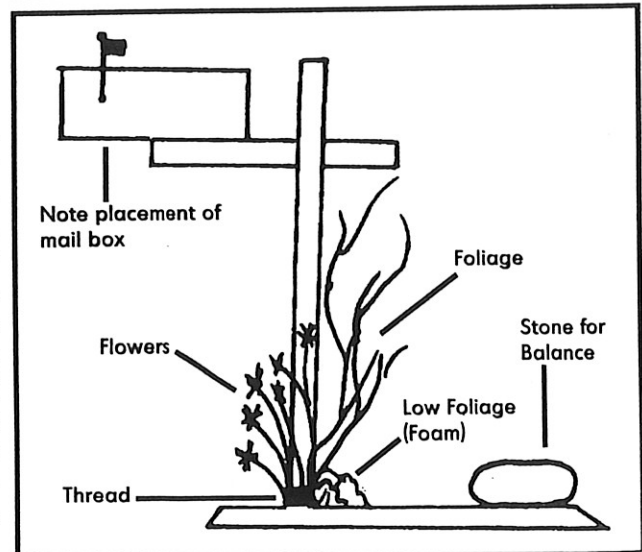
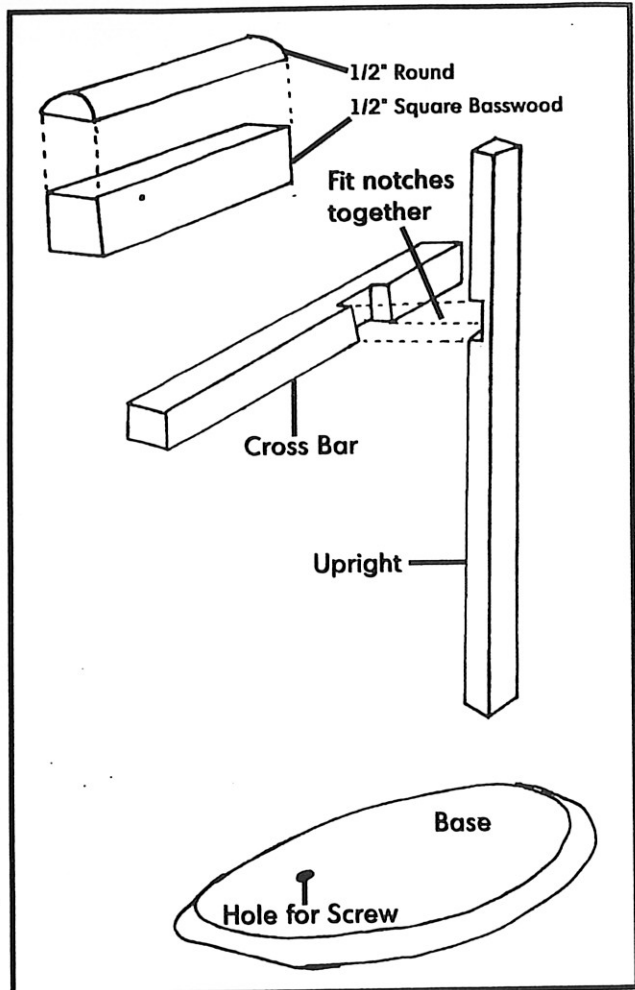
By Linda and Bob Sturhann,
Wilshire Miniatures

One of our most popular trail obstacles is our decorated mailbox. For those of you who are not familiar with it, the box is set across a shaped post that is offset on an oval foot. By setting the front of the post toward the front of the oval, the foot does not interfere with the model's feet. To insure that the mailbox and post won't tip over, a small stone is glued to the back of the foot for extra ballast. To help disguise the foot, it is covered with chopped foam "foliage" and the base of the post is decorated with greenery and dried flowers.

Although Bob makes our mailboxes, his procedures would not be practical for someone who is making just one obstacle. He constructs them out of half inch square basswood and half inch round molding, but the shortest piece most lumber yards will sell is around a yard long. Since you would need around an inch of each type, there would be a lot of waste if you had to purchase a yard. However, if you know someone who does wood-working or if your local lumber yard cuts moldings to size, you might be able to get some scraps. At the end of the article I will explain how to finish a wooden mailbox. If you can't find scraps of wood, try purchasing a mailbox from your local dollhouse/miniatures store. For Traditional scale, get the large RFD style box. Regular dollhouse mailboxes are classic size and too small for Traditional.

The rest of this article will discuss building the post and placing it on the foot and will give you ideas on how to decorate your mailbox post with flowers and greens.

Let me say a few words about the greenery used. Flowers and greens should be small, dainty, and/or feathery. Star flowers come in a variety of colors and are nice and small. Depending on the colors, they can look like daisies, roses, or plain wild flowers. Avoid some of the more bizarre colors like shocking pink or electric blue. They don't look as realistic as natural flower colors. German Statice makes nice vines and climbing flowers, but it is quite brittle and will have to be treated with much care. Even with the best care, it will have to be replaced frequently. There are several kinds of greens that are fine enough to use for miniatures. One resembles tiny pine boughs. They are popular around Christmas time, but can be found all year round. Another looks like an extremely fine fern similar to "air ferns." The best place to find assorted greenery and flowers is a large craft store. If your local craft store doesn't have a good supply, talk to your florist. He may sell the greens you need.



MATERIALS:

- 2 pieces of 3/8" square Basswood, 6" long and 3" long
- 1 piece of scrap wood, Basswood or Luan (3"x2" and 1/4" thick)
- 1 screw - size 6, 1/2" long
- dark walnut stain (for foot and for post if a rustic look is desired)
- white paint and sanding sealer (for white post if formal look is desired)
- Bond's 527 cement
- medium and fine sandpaper
- Small, smooth stone, should be attractive, but a realistic representation of a large rock
- chopped foam used with model railroads ("Woodlands Scenics" brand comes in the best colors, "Real-life" brand is too bright to look real)
- dried flowers and dried greens
- sewing thread - white for a white post dark brown for a stained post

TOOLS:

- large screwdriver
- small screwdriver
- mallet or hammer
- small round paint brush
- drill or awl
- rasp or coarse file

DIRECTIONS:

1) Using the large screwdriver and mallet, place a notch 1 1/2" from the end of the short section of the square basswood, and 1" from the top of the longer piece (See directions on making notches in *The Model Horse Gazette* Vol.10 No. 2, September/October issue). Sand sides as instructed.

2) Following instructions in the same article, fit the two pieces together and cement. When cement is completely dry, sand joint flat using the technique described in the above mentioned article.

3) For a more rustic looking mailbox, apply a coat of stain with a brush or soft rag (See article in *The Model Horse Gazette* Vol.10 No. 1, July/August issue). Set aside to dry.

4) For a more formal looking mailbox, apply sanding sealer and paint white.

(see *The Model Horse Gazette* Vol.10 No.1, July/August issue). Set aside to dry.

5) Although we use an oval base, there is no reason why the base can't be square or oblong. Whatever the shape, it is easier to decorate and conceal it if the edges are rounded. Using a rasp or coarse file, sand the sharp edge off the top surface of the foot. Try to round it out so that it loses its knife edge and gradually meet the bottom edge.

6) Using a hand drill or awl, drill a hole in the front edge of the foot for the screw that will attach the post. On a square foot, the post can be in a corner with most of the foot behind the box, similar to the oval foot. For an oblong foot, place the post along the short dimension at one end. Sand all rough edges including the ones rounded with the rasp.

7) To help conceal the foot under the foliage, stain it with dark walnut stain. Even if it shows through the greenery, it will just look like soil.

8) Using the drill or awl, place a small hole in the center of the bottom of the post. This will give the screw a start and will make attaching the foot easier.

9) Push the screw through the foot all the way so that the point and threads are above the top of the foot. Holding the post perpendicular to the foot, press it on the screw and turn it so that the screw taps into the wood in the center of the post. It is important that you keep the post perpendicular to the foot while you screw it on or it will lean when completed. When the screw starts to tighten up, hold the post in the correct position, toward the front of the foot, and do the final tightening with the small screwdriver.

10) At this point, your mailbox post may not stand. Place the smooth stone on the back of the foot. It should be far enough back that it won't get in the way when you're decorating the post. If the post still will not stand dependably, get a larger stone. Remember, the mailbox will add more weight, the post must be really

stable. When you have found the best place for the stone, glue it in place with the Bond's cement. Set aside and let the cement cure completely, preferably over night.

11) When the stone is securely glued to the foot, decide how you would like to decorate your mailbox post. I have found that a spray of tall greens and weed at the back that go around the rear arm of the cross and then blend into lower plants on the sides and front of the post make an attractive display. The amount and type of greenery and flowers you use is completely up to you. Some people like a garden effect, others prefer a wilder look. This is where your creativity takes over.

12) Once you have decided what plants you'd like where, it's time to start attaching them permanently. Take several yards of thread off the spool. Fold the length of thread in half so the two ends are together making a large loop. Wrap the doubled thread around the post and slip the ends through the loop end. Pull it tight. With the post and foot facing down so that the post is parallel with your work surface, put a dab of cement on the very bottom of the post. Place the greenery and flower stems in the glue and hold in place. Wrap the the thread around the stems several times and pull tight. Holding the thread and the stems securely, turn the post and repeat this technique until the flowers and greenery are secured to the post all the way around.

13) You should still have long threads left over for tying off. Carefully, separate the threads without allowing them to loosen. Take one thread and unwind it until it can't be easily unwound. Then wind it the opposite direction from the other thread until it is secure. Bring the two ends together. Place a small spot of cement under the two ends. Tie them tightly so that they are pressed into the cement. The cement will help to hold them tight while you tie the knots. Tie several knots so that the thread will not slip while the cement cures. Cut the ends short. Also, spread cement over the wraps of thread around the post to seal it. Press the loose ends of the thread into the

Wilshire Woodshop . . . Continued

cement. Set aside standing upright on the foot to firm up.

14) Once the cement is no longer runny, you can start covering the foot with the chopped foam foliage. Just like you planned where you would put the flowers, decide how much foliage you will put on the foot. It must cover the thread that holds the flowers in place, but other than that, you can apply a lot or just a thin covering, all one color green or a variety of green tones. cover the thread on the post first. Tear the foliage into pieces, from the size of a cherry to the size of a pea. Apply cement to the bottom and the side that will attach to the post and foot, and press into place. Continue around the post until the thread is covered.

15) The top surface of the foot can be covered as well. Use much flatter pieces, perhaps the size of a nickel or dime, but only 1/4" to 1/2" thick. Arrange it around the stone, especially if any cement oozed out from under it (and it always seems to no matter how careful you are!). When you've covered the foot to your liking, set the post aside and let everything firm up.

16) When all the "plants" have become secure, you can attach the mailbox to the cross arm. Apply cement to the cross arm and press the mailbox into it. If the cement oozes out, immediately wipe it up with a soft cloth or paper towel. If you leave, it may trickle down the side of the arm marring the paint, or it may drip onto your foliage. Once the cement is cured, your trail obstacle is ready to use.

TO MAKE YOUR OWN MAILBOX:

1) Cut a piece of half inch square basswood and a piece of half inch half round molding about one inch long. Sand off any rough areas, but leave the edges sharp.

2) Cement the half round onto the basswood. Line them up so that the sides are even with no ridges. Set aside to cure.

3) When the cement is dry, sand the flat

faces of the box to remove all seams or rough spots.

4) There are several methods for finishing the mailbox. You can paint it any color and add an illustration, initials of your stable, a number, anything you like. For a bare metal finish, paint the mailbox with gray craft paint. You may need several coats to get a good dense color. When the paint is completely dry, rub on a metal finish with "Treasure Gold" pewter rub. You can find metallic rubs in craft stores or stores that sell supplies for making picture frames.

5) If you would like to add a flag, drill a small hole in the side of the mailbox towards the front edge. Remove the point of a brad or finishing nail and trim to one inch long (be sure to trim at the point end leaving the top intact). Measure 1/4" from the cut end of the brad and bend at a 90 degree angle making an L-shaped stem for the flag. Cut a strip of red electricians tape around 1/4 inch wide and one inch long. Place the top of the flag stem in the center of the sticky side of the tape strip so that the knob at the top lies just above it. Carefully fold the tape over itself so that the two sides stick together. Trim the tape to make a square flag. Push the short part of the stem into the hole in the mailbox. If it stays there by itself, you need not glue it.

Along with projects, I would like to answer questions from you, the reader. If you have any question about this project, about wood working in general or if you're experiencing a problem when working with wood, stain, or paint, please write to me at:

Wilshire Miniatures
c/o Linda Sturhann
RR 1 Box B7
Mount Upton, NY 13809

or you can call me at (607) 764-8218 between 9 A.M. and 10 P.M. EST (no collect calls please) or you can fax me anytime at (607) 764-8219.

To purchase this finished obstacle, send a LSASE to the above addy 🐾

The Photo Clinic . . . Continued

in a model horse show.

I placed #2 first as he is an excellent example of an Arabian pleasure or park horse. He is alert yet well mannered, the tack fits well, the background is nice, and he looks ready to go. He does have faults. His saddle is a little too big for him although it is acceptable. His tailset is a little high, even for an Arabian, and he is a bit cresty. None of these should hinder his performance however.

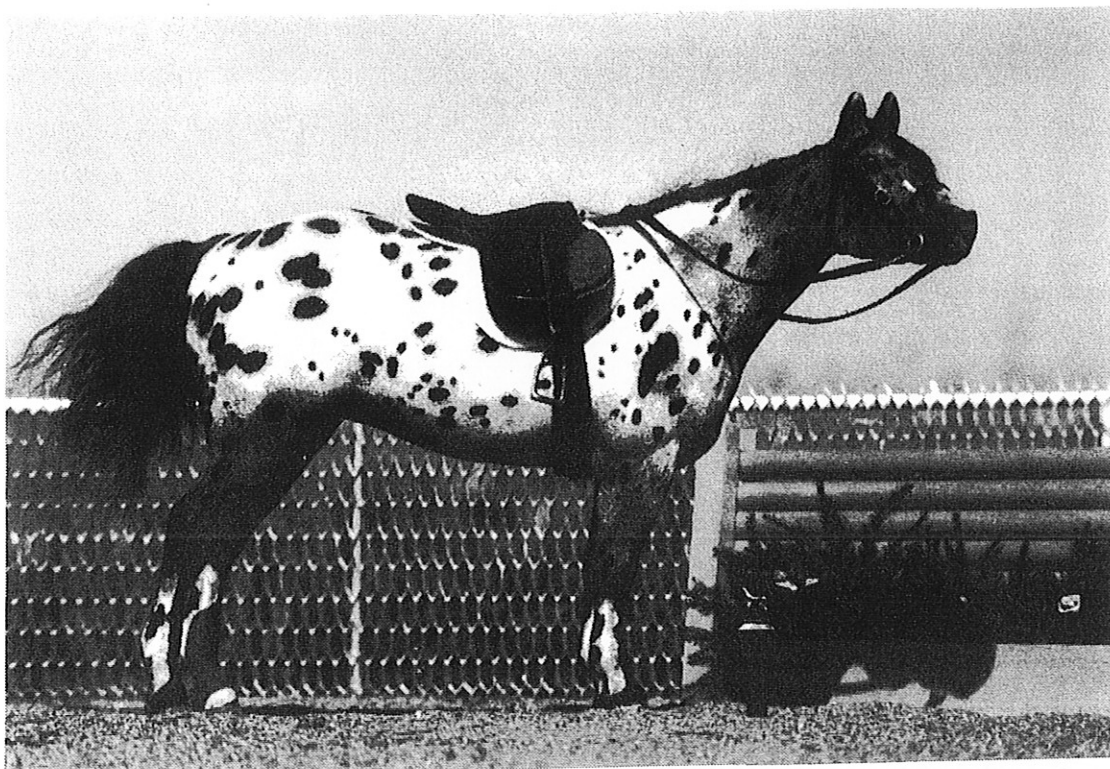
Photo #1 is a nice example of a big lick type TWH. She has nice action and a realistic, although dark, background. Her tack fits well and is correct for a walker. Walkers use single reined walking horse bits. Her stacks (pads on front feet) are correct although all the hooves and stacks should be blackened. She wears chains (which are legal) as you would expect on a horse with this much action. In reality walking show horses in this division **ALWAYS** wear stacks and chains. Her conformation is more reminiscent of the stockier horses of yesteryear but is acceptable. Her mane and tail are on the bushy side, but overall she is a nice example of her type.

Photo #3 is a nice example of the stock type saddleseat pleasure horse. Although we can't see her action, she is alert and mannerly, her tack is correct, and her conformation would be suited to english pleasure. The background is too dark and the footing should be dirt or very short grass.

Photo #4 is a pretty horse but his short, cresty neck is neither appealing nor conducive to elegant movement. His bridle is in his eye, otherwise it is correctly made and placed. His tailbone is not haired to the top. I find the paneled background distracting. Correcting the tack and hair flaws and replacing the background with a neutral light colored poster, it not a more elaborate background, would help this photo tremendously. 🐾

DO YOU

- WANT HIGHER PLACINGS IN PHOTO SHOWS?
- THINK IT IS USELESS TO EVEN TRY TAKING YOUR OWN PHOTOS?



A YARD WINNING MODEL PHOTOS

**IS THE ANSWER TO YOUR PROBLEMS!
AN ILLUSTRATED, INFORMATIVE, HOW-
TO BOOK THAT COVERS ALL ASPECTS
OF MODEL HORSE PHOTOGRAPHY.**

*TO ORDER YOUR COPY
SEND ONLY \$10 TO:*

SILVER SPUR STABLES
JILL STEVENS
ROUTE 1, BOX 24
ALLENDALE, IL 62410-9702

LIVE SHOW SCRAPBOOK

12TH ANNUAL MAINE LIVE!

The 12th annual Maine Live Show was held August 13, 1994 in Camden, Maine. Thirteen entrants lined their models up in over 38 classes judged by Jamie Coughlin, of Lynn Haven, Florida. Elizabeth Jackson judged the Novice division. An auction featuring donated models, tack, boots, and other horse related items was held after the show and raised over \$100 to help feed the Humane Society's rescued horses and ponies. Bayou Workshops donated a flashy chestnut Appaloosa RRH Lady Phase which brought \$150 to help defray show expenses. The Maine Live is grateful to the following donators of prize and auction items: The Unicorn Woman, Wilshire Miniatures, Bayou Workshops, Paige Christie, The Fence Post, Esbee Labels, Danielle Plourde, Sarah Adelberg, Sunny Shamrock Farm, Ervin Bickford, Michelle Mckenney, Larry McLaughlin, and Jenna Lookner. The following champions were named:

PERFORMANCE CHAMPION
Horizontal Bob o/b Linda Pinkham

RESERVE
WV Crystal Blue Persuasion
o/b Danielle Plourde

OF HALTER CHAMPION
EH Scimitar o/b Elizabeth Jackson

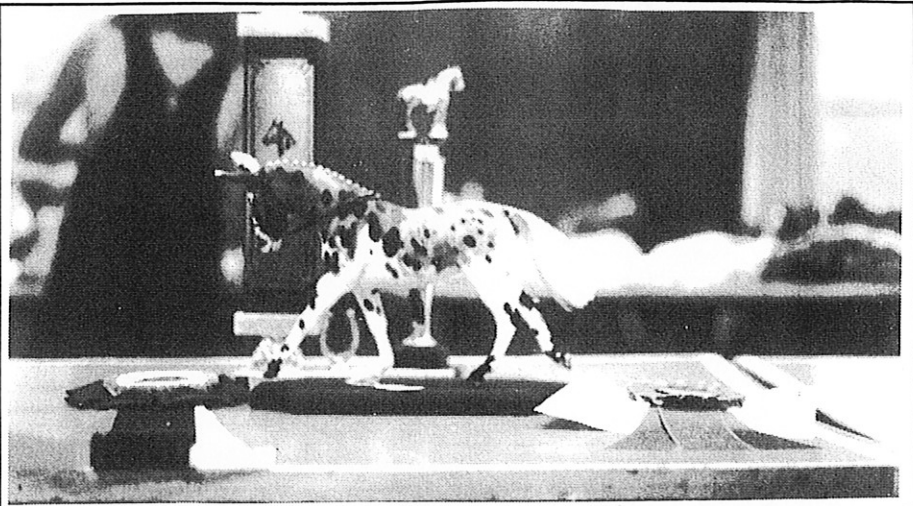
RESERVE
Kestrel o/b Linda Pinkham

RR HALTER CHAMPION
Velt o/b Carlee Balling

RESERVE
Centepede o/b Carlee Balling

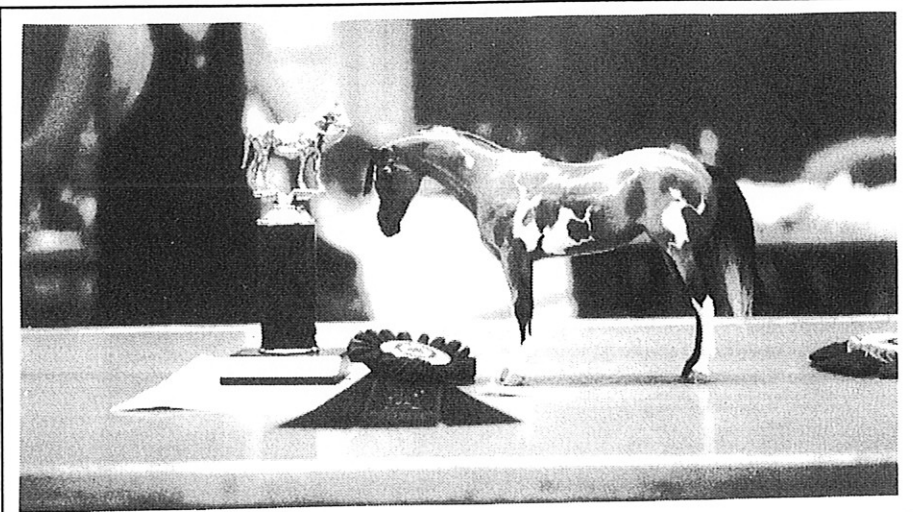
JR/NOVICE CHAMPION
Soundgarden o/b Sarah Adelberg

RESERVE
Valentine o/b Mickie Glasser



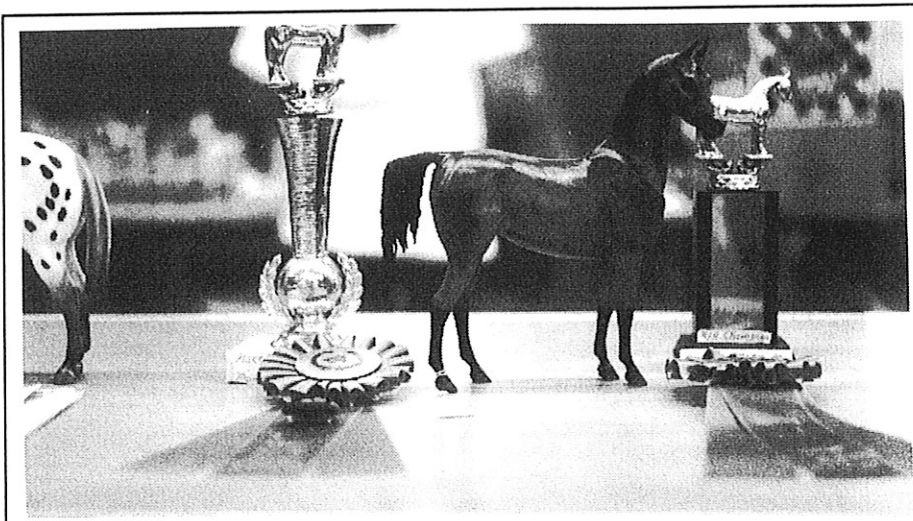
Performance Champion and Reserve Grand Champion, *Horizontal Bob* o/b Linda Pinkham.

Photo by Jamie Coughlin



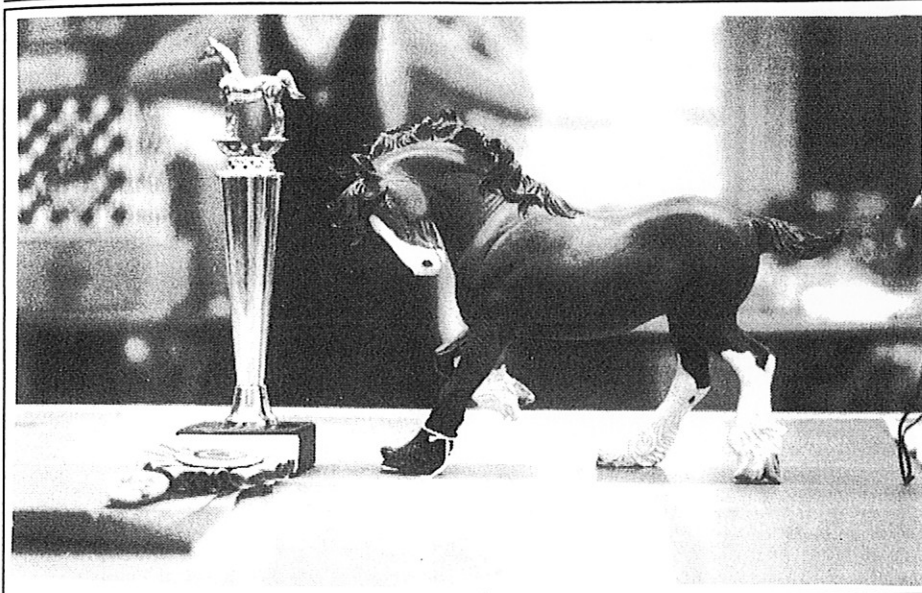
WV Crystal Blue Persuasion o/b Danielle Plourde, Reserve Performance Champion.

Photo by Jamie Coughlin



RR Halter Champion and Overall Halter Champion, *Velt*, o/b Carlee Balling.

Photo by Jamie Coughlin



EH Scimitar o/b Elizabeth Jackson, OF Halter Champion.

OVERALL HALTER CHAMPION
Velt o/b Carlee Balling

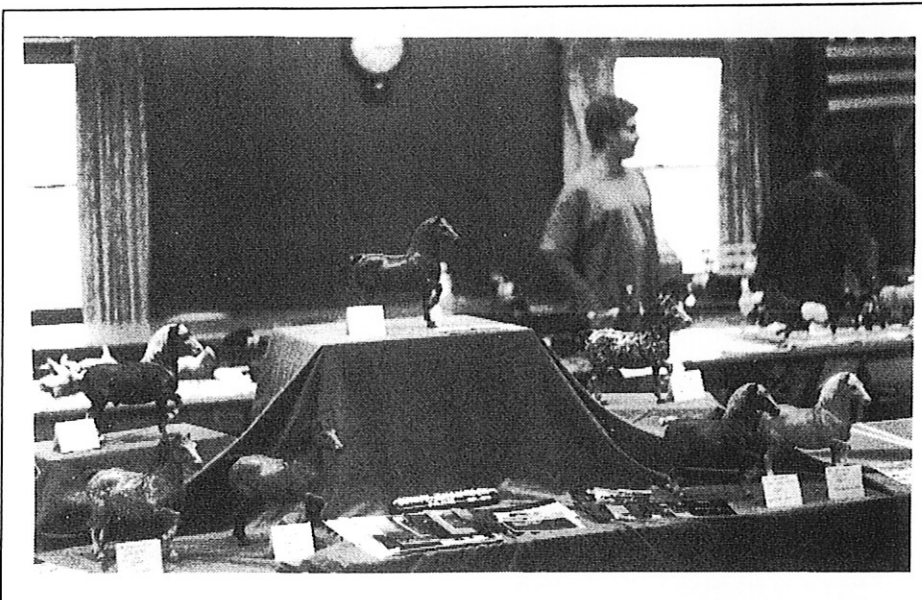
RESERVE
Centepede o/b Carlee Balling

OVERALL GRAND CHAMPION
Centepede o/b Carlee Balling

RESERVE
Horizontal Bop o/b Linda Pinkham

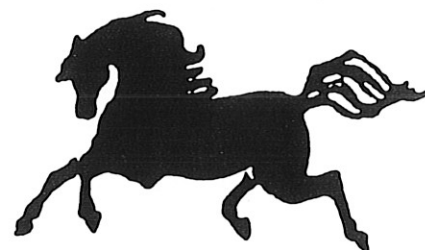
Judges Choice Models: A Fifth of Beethoven (D.P.), Cappacino (Michelle McKenney), Rampage (MM), Gray Flannel (Linda Sturhann), Capone (Leslie Sait), Prince Oskar (LS), Pocket Rocket (CB), Noble Flare (MM), Smoke and Cinders (MM) and Mud Hen (CB).

Photo by Jamie Coughlin



Collector class winner, Linda Pinkham of Sunny Shamrock Farm.

For information on the 13th Annual Maine Live Show or the '95 Benefit Auction Model, send a LSASE to Linda Pinkham, P.O. Box 493, Camden, ME 04843.



HALLIE HO EXPO IV!

Hallie Ho Expo IV was held May 14, in McMinnville, Oregon. New this year were the addition of Performance classes and a revamped Novice Division. There were 21 exhibitors showing in Original Finish/Breyer-Hartland, Original Finish/China-Resin, R/R/H Models, Novice and Performance classes. The "Hobby Happenings" table was a big success, thanks to the many hobbyists who sent sales lists, class lists, etc. And, as always, everyone enjoyed the "Anything Goes" competition. The ALES delegation made a vain but glorious attempt to win with their "Dead Mule" entry, but the challenge was met by Monte Snyder's "T-3 Desert Patrol," which took first place. With four show rings being judged simultaneously, the show moved along very quickly and we wre outta there by 2:30!!

Photo by Julie Wilkowski



The ALES delegation's entry for "Anything Goes" ... Dead Mules. From left to right, Denise Hauck, Juanita Snyder, and Laura Pervier (*I think it's no surprise the creator of the Poopalooosa from last issue is pictured here - Ed.*).

CHAMPION

OF BREYER/HARTAND

Light Breed: Vashity (Denise Hauck)
Stock Breed: Mirrored Pale (D.Hauck)
Other Breed: Agate (Jodi Frenier)
Model Caliburn (J. Frenier)

OF CHINA/RESIN

Light Breed: Shilo (Karen Bates)
Stock Breed: Maynara (Carolyn McRae)
Other Breed: McShane (C. McRae)
Model: McShane (C. McRae)

R/R/H

Light Breed: Roxanna (Melissa Clegg)
Stock Breed: Guardian Spirits (C.G)
Other Breed: Bronwyn (C. Gherhardt)
Workmanship: Roxanna (M. Clegg)

NOVICE

OF: Plain Pixie (Melissa Grimm)
CM: No Entries
CR: Galaxia (Kellie Hollenbeck)

PERFORMANCE

Open: Pacific Diamond(T.Durrell-Khalife*)
* Shown by Brenda Cutting
Novice: Mighty Bars (Terry Wilson)

GRAND CHAMPION

OF: Caliburn (Jodi Frenier)
CR: McShane (Carolyn McRae)
RRH: Roxanna (Melissa Clegg)
Novice: Plain Pixie (Melissa Grimm)

SUPREME CHAMPION OF SHOW:
McShane (Carolyn McRae)

RESERVE CHAMPION

Judge: Julie Wilkowski
Bang Tango (Liz McMaster)
Simply Devious (Charlene Gherhardt)
Winterlight (Lynn Hiersche)
Fairlane Fantasy Rival (Cheryl Baird)

Judge: Juanita Snyder
Midnight Oil (Cheryl Baird)
Lerwick (Carolyn McRae)
Alaric (Chris Gunter)
Alaric (Chris Gunter)

Judge: Teresa Bentz
Kia (Melissa Clegg)
Persuasion (Melissa Clegg)
Thunder Alley (Melissa Clegg)
Mahtociqula (Liz McMaster)

Judge: Laura Pervier
Dragon's Ghost (Terry Wilson)
No Entries
None

Judge: Laura Pervier
Night Safire (Liz McMaster)
Grand's EM (Terry Wilson)

RESERVE GRAND CHAMPION
Mirrored Pale (Denise Hauck)
Alaric (Chris Gunter)
Thunder Alley (Melissa Clegg)
Galaxia (Kellie Hollenbeck)

RESERVE SUPREME CHAMPION:
Alaric (Chris Gunter)



Novice and Performance Judge, Laura Pervier.

Photo by Julie Wilkowski



Supreme Champion, *McShane*, and Reserve, *Alaric*.

Photo by Julie Wilkowski



Pacific Diamond, Performance Champ, and *Night Safire*, Reserve.

Photo by Julie Wilkowski

Hallie Ho Expo V will be held July 15, 1995 at the Community Center in McMinnville. There will be an entirely new classlist and maybe a few surprises! 🐾

COMING NEXT ISSUE IN THE MODEL HORSE GAZETTE . . . *Horse Jumping!*



Let's see your photos, original art, stories & articles, etc. Deadline for submissions is May 15!

We also need entries for next issues photo clinic on hunter over fences! Send directly to Jamie Coughlin, 1525 Britton Road, Lynn Haven, Florida 32444-3311



CLASSIFIEDS

CLUBS

All Breed Showers Only Club (ABSOC) Established November, 1986. Objective: to promote halter showing for all breeds and all levels of exhibitors. Membership \$5.00 per year. Monthly foal show, bi-monthly newsletter. Director: Michelle Miller, 8050 Oackview Ridge, NE, Rockford, MI 49341.

New England Model Racing Association. Open to any and all breeds. Free Races! Lots of fun! Only \$3.00 per year. SASE for more information. Jenn Beede, RFD 1 Box 1773, Bucksport, ME 04416.

The Stablemates 4H club meets in Hunterdon County, New Jersey (both residents and non-residents of Hunterdon are welcome). Meets on first Thursday of the month and occasional weekend days. For youth grades 1-13, adults join as assistant leaders. The club features both Live and photo showing, "how to" clinics, weekend camps, trips to real horse farms and shows, and we participate in local, county and state level competitions. For more information, contact Stablemates 4H Club at P.O. Box 1037, Flemington, New Jersey, 08822. (908) 727-6457.

Hartland Club (no fee, just subscription cost), established December 1994. Publication: The Hartland Market (monthly), \$7/six issues, \$4/three issues (U.S.A.). SASE to Gail Fitch, 1733 N. Cambridge Avenue, #109 Milwaukee, WI 53202.

A NEW CLUB FOR MINIS! The All Halter Mini Club is for model horses 4.5" at eartips or less. Separate divisions for OFs, RRHs, and Novices. Send LSASE for info to: AHMC, c/o Jan Cary, 32979 Heatherwood, Lenox, Michigan 48048-2929.

The Club for the Original Finish collector!! Our club is great for both beginners and advanced showers alike. We feature a bi-monthly newsletter, free monthly shows, and great year-end awards. Want to know more? Send LSASE for more details to: Beverly Davis, 802 North Shore Road, Atkins, Arkansas 72823.

FOR SALE

Cantering Welsh Pony custom by Maynard to buckskin tobiano Paint Pony \$90.00 ppd. Hartland Arab custom by Pope to dark grey \$90.00 ppd. Quarter Horse yearling custom by Hartrampf to buckskin tobiano paint mare \$200 ppd. Haflinger custom by Hartrampf \$130 ppd. For more information send a LSASE to Michelle Miller, 8050 Oakview Ridge NE, Rockford, Michigan, 49341.

For Sale: Two Ceramic Performing Mistys, NIB, \$75 each ppd; #838 Hobo, \$33; #820 Noble Jumper, \$40; #65 Justin Morgan, \$27; #236 Action Stock Horse Foal, \$25. All prices include postage paid. For more information, send a LSASE to Fox Ridge Stables, Jenny Merrill, 3617 S. 400 E., Bountiful, UT 84010.

ATTENTION: If you collect, show, or sell Hartland models, check out *Hartland Market*, monthly newsletter since December 1994. It features latest news on Hartland models, a monthly show, photos of special run models, classified and display advertising, articles on model values and rare items, and reports on the Hartland census we're conducting. Subscriptions are just \$7 for six issues, or \$4 for three issues. Also available: a book all about Hartlands, 225 pages, 225 color photos. For more information, send a LSASE to Gail Fitch, 1733 N. Cambridge Avenue #109, Milwaukee, WI 53202.

TACK

Western Saddle Kits in Traditional and Classic sizes! Make your own miniature saddle, bridle, and breastcollar. Kits are customizable -- they can be decorated, tooled, silver laced and dyed your favorite color! \$18 Traditional, \$17 Classic plus \$3.25 shipping (USA). \$2.00 for current catalog of supplies, Rio Rondo Enterprises, Carol Williams, P.O. Box 111, Copeland, KS 67837.

Nickel and Gold plate buckles from Rio Rondo! We have buckles available in sizes for 3/32" and 1/8" leather lace, as well as for 1/16" (split lace) and 3/16" (florentine). Choose from three shapes (oval, square or round). Super-slick shiny finish slides over your lace straps easily! Available in packs of 6 for \$1.00 or 30 (same size/style/color) for \$3.00 (order 5 or more sheets and get each sheet for \$2.00). Minimum order is \$10.00. \$3.25 shipping (US). Get our catalog full of tackmaking supplies for \$2.00. Rio Rondo Enterprises, P.O. Box 111, Copeland, KS 67837/ (316) 668-5421.

Learn new painting tricks with color Formulas & Techniques 2nd Edition! This 436 page volume plus a set of 60 formula cards is now available for \$33.25 postage paid (US), \$34.25 (Canada). Carol Williams, Rio Rondo Enterprises, P.O. Box 111, Copeland, KS, 67837. (316) 668-5421. Visa and Mastercard accepted. \$2.00 for current catalog.

The Unicorn Woman is celebrating 15 years of tackmaking! We have new tack items, new kits, new laces, and a new catalog. Send \$2.00 (refundable with order) for the 1995 catalog to: The Unicorn Woman, Melody Snow, P.O. Box 595, Lillian, Texas 76061-0595.



CASCADe MODELS

Phone: (208) 743-4650

Order Line 1-800-860-4080

Daphne R. Macpherson
6310 136th Place S.W.
Edmonds Wa 98026

FAX: (208) 745-2432

BREYER 1995 PORCELAINS, ACCESSORIES & OTHER ITEMS

No.	Description	Price	No.	Description	Price
BREYER 1995 FINE PORCELAINS			BREYER 1995 ACCESSORIES		
79193	Shire Horse	\$138.75	279	Pine Livestock Feeder	\$25.00
79194	Fine Porcelain Spanish Barb	\$104.50	280	Feed	\$8.00
79195 N	Fine Porcelain Arabian in Costume	\$148.50	281 N	Western Saddle Stand	\$3.75
BREYER 1995 B-RANCH (CLASSIC SIZE) SERIES			282 N	English Saddle Stand	\$3.75
263 N	B-Ranch Blackjack	\$14.25	283 N	Tack Box - Blue	\$7.50
264 N	B-Ranch Apache	\$14.25	284 N	Tack Box - Natural	\$7.50
265 N	B-Ranch Spice	\$14.25	2301	Little Red Country Stable	\$72.25
266 N	B-Ranch Cloud	\$14.25	2405	Fancy Show Halter	\$3.75
267 N	B-Ranch Azul	\$14.25	2406	Saddle, Bryn Mawr Saddleseat	\$16.25
268 N	B-Ranch Patches	\$14.25	2407	Saddle, Dubliner Saddleseat	\$18.75
269 N	B-Ranch Tack Box/Carrier	\$45.00	2408	Saddle, Bristol Huntseat	\$22.75
270 N	B-Ranch Haler	\$3.00	2409	Saddle, Canongate Huntseat	\$25.50
271 N	B-Ranch English Saddle & Bridle	\$9.75	2410	English Show Bridle	\$12.00
272 N	B-Ranch Western Saddle & Bridle	\$9.75	2411	Hunter/Jumper Bridle	\$11.25
273 N	B-Ranch Roll Top Jump	\$7.50	2412	Western Bridle & Saddle Blanket	\$10.50
274 N	B-Ranch Panel Jump	\$7.50	2413	Western Hackamore	\$13.50
285 N	B-Ranch Plank Jump	\$7.50	2414	Western Roper Saddle Set	\$28.50
286 N	B-Ranch Ribbons	\$2.75	2415	Western Pleasure Saddle	\$20.25
2003 N	B-Ranch Glory & Plank Jump Set	\$18.50	2416	Western Cutting & Reining Saddle	\$23.25
2004 N	B-Ranch Buck & Hillary Set	\$36.00	2417	Western Barrel Racer Saddle	\$23.25
BREYER 1995 RIDER FIGURES			2418	Western Parade Saddle Set	\$30.00
510	Brenda Dressage	\$8.75	2419	Western Lead Rope, Halter, & Saddle Pad	\$14.00
511	Brenda Show Jump	\$8.75	2420 N	Stoneleigh Dessage Saddle & Pad	\$28.50
512	Brenda Saddle Seat	\$8.75	2421 N	Skid Boots	\$11.25
513	Stampede Riggins - W. Rider	\$8.75	2422 N	Shin & Ankle Boots	\$11.25
514 N	Brenda Western	\$8.85	2423 N	Leather Saddle Bag	\$10.50
515 N	Hilary 6" Doll, English	\$7.50	2424 N	Leather Riding Crop	\$6.50
516 N	Hilary 6" Doll, Western	\$7.50	2425 N	Bareback Pad	\$10.50
BREYER 1995 STABLEMATE SERIES			2426 N	Leather Halter	\$14.25
5650	Saddle Club Stablemates	\$11.25	2427 N	Bedroll	\$9.50
5900 N	Stablemates - Assorted (more news later)	\$2.25	2428 N	Canvas & Leather Feed Bag	\$10.50
BREYER 1995 SADDLE CLUB (LITTLEBIT) SERIES			2429 N	Grooming Kit	\$10.50
1016	Starlight & Carol Set	\$12.45	2430 N	Canteen	\$9.75
1017	Topside & Stevie Set	\$12.45	3940	Cooler Assortment	\$5.75
1018	Pepper & Lisa Set	\$12.45	3946	Blanket & Shipping Boots - Red	\$9.75
1019	Spot & Kate Set	\$12.45	3947	Blanket & Shipping Boots - Blue	\$9.75
1021 N	Belle	\$8.00	3948	Blanket & Shipping Boots - Burgundy	\$9.75
1022 N	Prancer	\$8.00	7500	Corral	\$9.00
1023 N	Moonglow	\$8.00	7600	Brick Wall & Ground Box	\$6.50
1024 N	Delilah	\$8.00	7610	Brush Box	\$5.00
1025 N	Cobalt & Veronica Set	\$12.45	7615	Show Ring Fencing	\$10.75
1995BEN	Full Color Catalog	\$2.75	7620	Grand Prix Rail Set	\$12.00
70089	Breyer Model Horse Video	\$25.50	7621 N	Plank Jump Set - Teal/White	\$12.00
70094	Breyer Plant Video	\$15.00	7622 N	Plank Jump Set - Blue/Yellow	\$12.00
			7623 N	Show Jumping/Eventing Flags (4)	\$4.50
			7624 N	Western Rodeo Flags (4)	\$4.50
			7625 N	Panel Jump Set	\$15.00
			7626 N	Wishing Well Jump Set	\$15.00
			7627 N	Cavaletti Set	\$4.50

N = New for 1995

For items on this page Shipping Charges depend on size & weight of item. See Order Form for details.

See Order Form for Air/Express/Alaska/Hawaii/Canada/Overseas Shipping Charges.

Breyer does not release all new models immediately. Additional Shipping Charges may apply to split orders.

Mastercard/VISA accepted. Order Line open 7am-7pm Pacific Time 7 days a week.